

Quick Start Guide

High-Definition Wireless Presentation System



Contents

Congratulations on your purchase of the High-Definition Wireless Presentation System (WPS-HD). With the WPS-HD, your projector can wirelessly communicate with any WiFi-enabled computer or laptop in order to project desktop contents in high definition quickly and efficiently.

This Quick Start Guide is intended to help you begin enjoying the benefits of wireless projection right away.

Your package should contain the following:

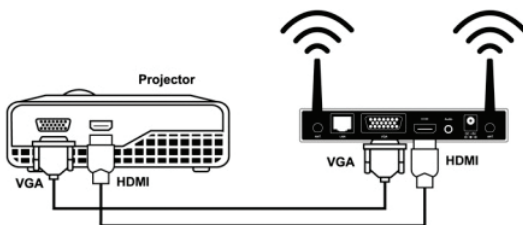
- High-Definition Wireless Presentation System (WPS-HD)
- Two (2) antennas
- Universal Power Adapter (DC 5V) with 4 interchangeable plugs
- USB Token with WPS software, full User Manual, and other helpful applications
- Quick Start Guide (this document)

Note: For a complete explanation of the features of the WPS-HD, please refer to the user manual included on the USB Token.

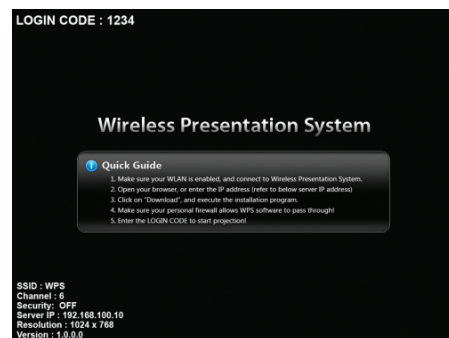
Setting up WPS-HD

WPS-HD is compatible with Windows PC – including Windows 7, Vista, and XP – as well as Macintosh OS. Follow these steps to set up your projector and computer for wireless projection:

1. Twist the antennas onto the gold-plated connectors on either side of the back of the WPS-HD unit. Do not overtighten. Angle the antennas upward for best reception.
2. Connect either the projector's VGA or HDMI cable into the VGA or HDMI port on the back of WPS-HD.

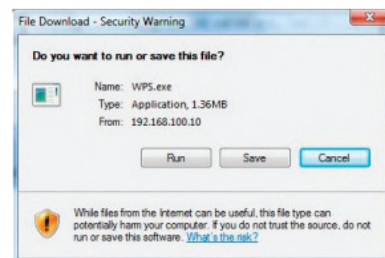
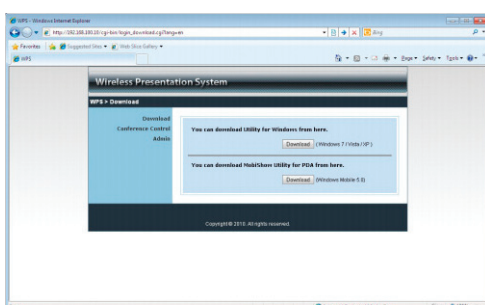


3. Attach the power supply to the back of WPS-HD. Insert the appropriate plug for your country/region into the adapter firmly until the tab clicks into place. Tab may be slid down in order to remove plug. Insert the plug into an electrical outlet.
4. The projector will project a Startup screen. Important information on this screen includes a Login code and the Server IP of the WPS-HD.



Setting up your computer

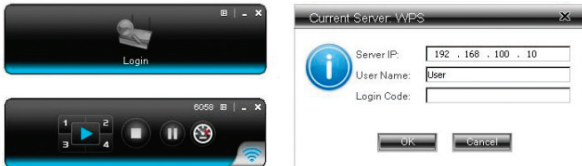
1. Open your available WiFi Internet connections, and choose "WPS" to connect with. (If you are unsure how to access available Internet connections, please see user manual for more information.)
2. Open your Internet browser. The WPS main page may appear automatically. If not, enter the Server IP found on the Startup screen into your browser and press Enter to navigate to the main page.



3. Click "Download" on the WPS main page. Choose the Windows 7/Vista/XP download if using Windows, or the "Mac Utility" download if using Mac. Follow the prompts to install the WPS software.
4. Alternately, you can use WPS-HD, without the need to install the software, using the included USB token.

Communicating with WPS-HD

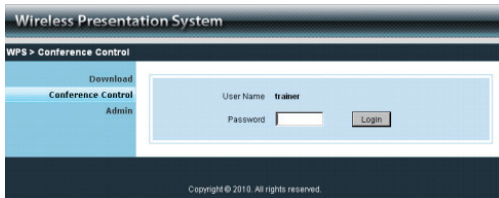
1. After successful software installation, double-click the WPS icon on your desktop to start the WPS client.
2. A login screen will appear:
 - For "Server IP" enter the Server IP address from the projector Startup screen (if it does not already appear).
 - For "User Name" enter whatever you'd like to identify the computer.
 - For "Login Code" enter the four-digit login code displayed on the Startup screen.
 - Click Okay.
3. A control panel will appear. Click the Play button to enter full-screen projection mode. The projector will automatically sync with your computer, and the contents of your desktop will be projected in real time and high-definition 720p.



Conference mode

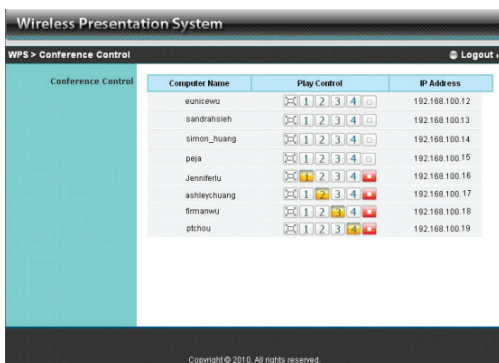
Conference mode allows a single administrator to control the projector's contents at any time when using split-screen mode and multiple computers. To access this mode:

1. Navigate the administrator's Internet browser to the WPS main page by entering the Server IP found on the Startup screen.
2. Below the Download tab is Conference Control. Click on this tab. A password prompt will appear. The default password is "trainer". Input the password and log in.



3. A list will appear of all the computers currently connected to the WPS-HD. Under the Play Control column, the administrator may click on the buttons to control what is projected for each computer. Buttons include:

- ▶ : Computer's contents will be projected in full screen (no split-screen)
- 1 : Computer's contents will occupy Quadrant #1 of split-screen mode
- 2 : Quadrant #2 of split-screen mode
- 3 : Quadrant #3 of split-screen mode
- 4 : Quadrant #4 of split-screen mode
- : Stops the computer's contents from projecting altogether



Split-screen mode

WPS-HD has the ability to simultaneously project up to four desktops in split screen. This is useful for comparing data or multimedia presentations.

To use split-screen mode, follow the steps just described for each of up to four computers. However, instead of pressing the Play button (the final step), click on one of the four split-screen buttons (labeled 1 through 4). Use a different number for each computer to display them in the four different sections of the projector's split screen.



Audio projection

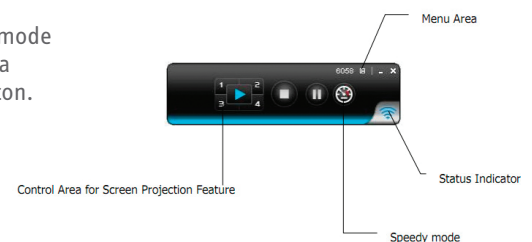
If you'd like to project audio along with video, you won't need to do anything else if you're using Windows 7, Windows Vista, or Mac. Sound from your computer will automatically be sent through the projector's speakers. If you're using Windows XP, follows these steps to project audio:

1. Insert the included USB Token into your computer. In the Applications folder on the Token, double-click "VAC_Setup1.0.8.5(for XP).exe" to install the Virtual Audio Control.
2. You now need to select the Virtual Audio Driver as your playback device. Click on Control Panel >> Sounds, Speech, and Audio Devices >> Sounds and Audio Devices.
3. Click the Audio tab. Under Sound Playback, change the Default Device to "Virtual Cable 1". Click OK.
4. The projector will now play the computer's audio. Remember to switch back to your previous sound device after using WPS-HD.

NOTE: Audio projection is only available if you're using an HDMI connection.

Speedy mode

On the control panel, Speedy mode is indicated by a speedometer icon.



Click on the speedometer to enable Speedy mode. Speedy mode buffers the video image so that video playback is smoother. The projector will pause a few seconds for video sync as well as audio sync. We recommend enabling Speedy mode for all of your video projections to ensure smooth playback.