

Quick Start Guide

Wireless Presentation System

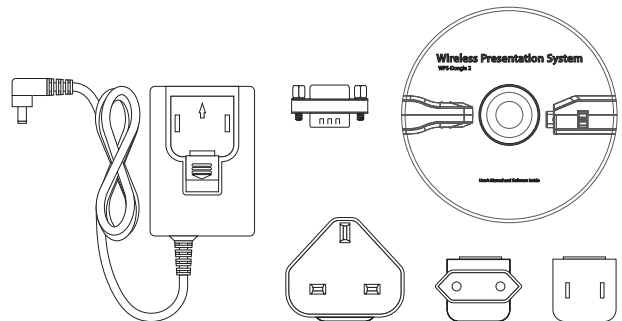
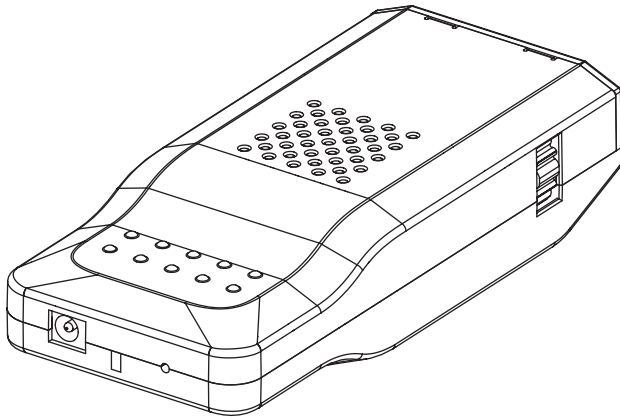
Contents

Congratulations on your purchase of the Wireless Presentation System (WPS). With the WPS, your projector can wirelessly communicate with any WiFi-enabled computer or laptop in order to project desktop contents quickly and efficiently. This Quick Start Guide is intended to help you begin immediately enjoying the benefits of wireless projection.

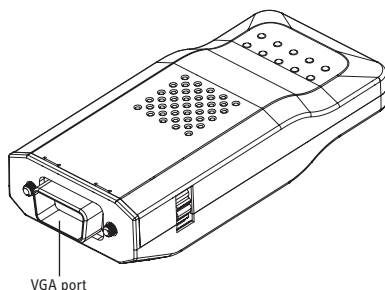
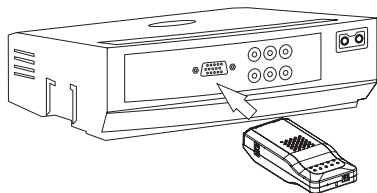
Your package should contain the following:

- Wireless Presentation System (WPS) Dongle
- Universal Power Adapter (DC 5V) with 5 interchangeable plugs
- VGA Extension Adapter
- CD-ROM with WPS software and full User Manual
- Quick Start Guide (this document)

Note: For a complete explanation of the features of WPS, please refer to the user manual included on your CD-ROM.

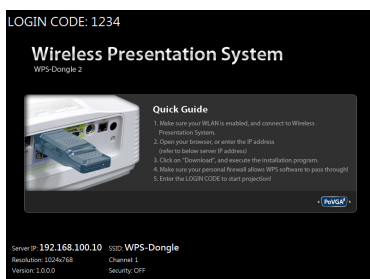


Setting up WPS

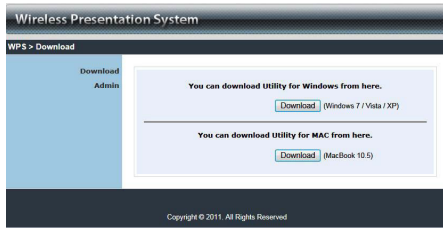


The Wireless Presentation System is compatible with both PC and Mac. Follow these steps to set up your projector and computer for wireless projection.

1. Insert the WPS Dongle into the VGA adapter on the back of your projector. Use the black gears on either side of the dongle to securely tighten the screws of the unit into the projector.
2. If your projector has PoVGA (Power over VGA) technology, a power supply is not needed. If there is no PoVGA, attach the power supply to the back of the dongle. Insert the appropriate plug for your country/region into the adapter firmly until the tab clicks into place. Tab may be slid down in order to remove plug.
3. The projector will project a Startup screen. Important information on this screen includes a Login code and the Server IP of the WPS: 192.168.100.10.



Setting up your computer



1. Open your available WiFi Internet connections, and choose “WPS-Dongle” to connect with. (If you are unsure how to access available Internet connections, please see user manual for more information.)
2. Open your Internet browser. The WPS main page may appear automatically. If not, enter the Server IP, “192.168.100.10,” into your browser and press Enter to navigate to the main page.
3. Click “Download” on the WPS main page. Choose either the Windows or Mac download depending on your operating system. Follow the prompts to install the WPS software. (Alternately, you can install the software from the included CD-ROM.)

Communicating with WPS



1. After successful software installation, double-click the WPS icon on your desktop to start the WPS client.
2. A login screen will appear:
 - For “Server IP” enter “192.168.100.10” (if it does not already appear).
 - For “User Name” enter whatever you'd like to identify the computer.
 - For “Login Code” enter the four-digit login code displayed on the projector Startup screen.
 - Click Okay.
3. A control panel will appear. Click the Play button to enter full-screen projection mode. The projector will automatically sync with your computer, and the contents of your desktop will be projected in real time.

Split-screen mode



WPS has the ability to simultaneously project up to four desktops in split screen. This is useful for comparing data or multimedia presentations.

To use split-screen mode, follow the steps just described for each of up to four computers. However, instead of pressing the Play button (the final step), click on one of the four split-screen buttons (labeled 1 through 4). Use a different number for each computer to display them in the four different sections of the projector's split screen.