



IPEVO Presenter for Mac and Windows

Quick Start Guide

Introduction

IPEVO Presenter for Mac and Windows is designed for use with the IPEVO line of document cameras, including Point 2 View, Ziggi-HD, iZiggi-HD, VZ-1 HD and Ziggi-HD Plus. Presenter displays the live video feed from your camera. It's an ideal solution to send live video from your computer to your projector for lessons and presentations. Presenter also contains numerous handy tools and customizations to help you get the most from your camera.

This guide will help familiarize you with Presenter's functions and settings.

Downloading IPEVO Presenter

Visit support.ipevo.com for the latest version of Presenter. Click the download link for the Mac or Windows version, then follow the prompts to complete installation. Presenter is free to use and may be installed on multiple computers.

Questions? Comments?

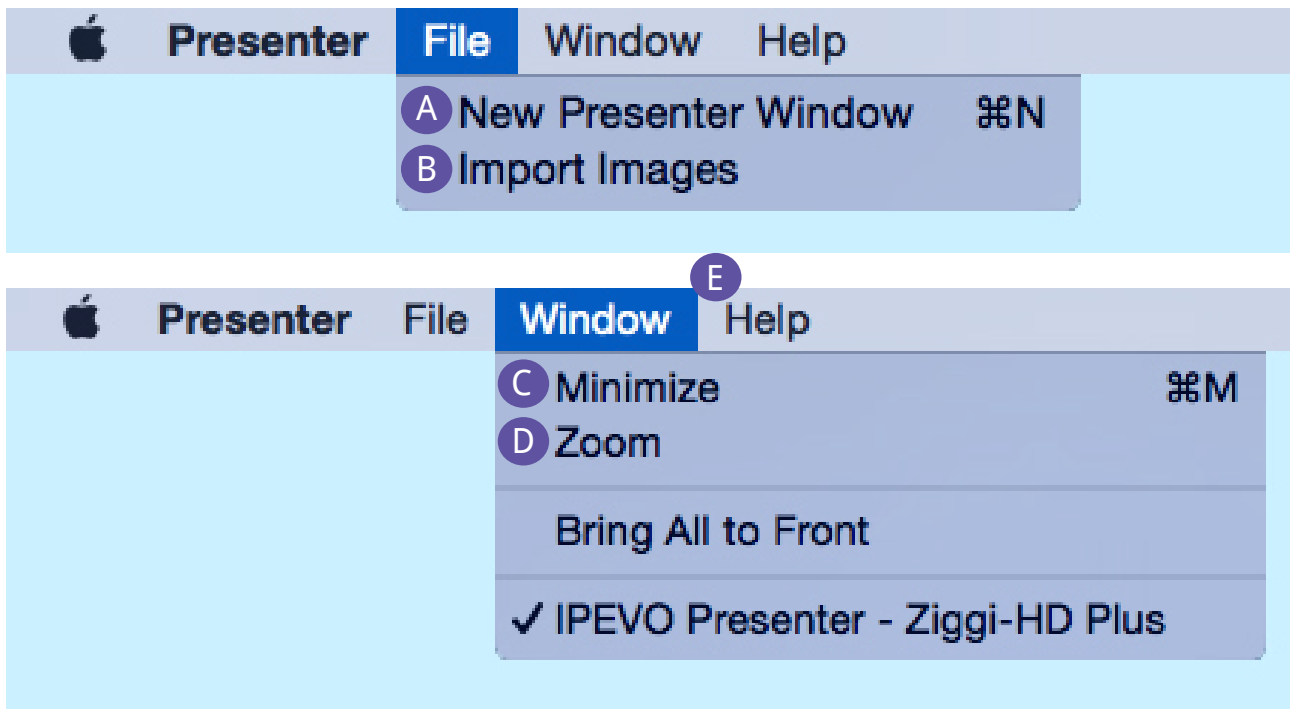
If you've read this guide and still have questions, we're ready to help. Email cs@ipevo.com and a member of our Customer Support team will be happy to assist you.



Status Bar Functions (Mac) / Window Functions (Windows)

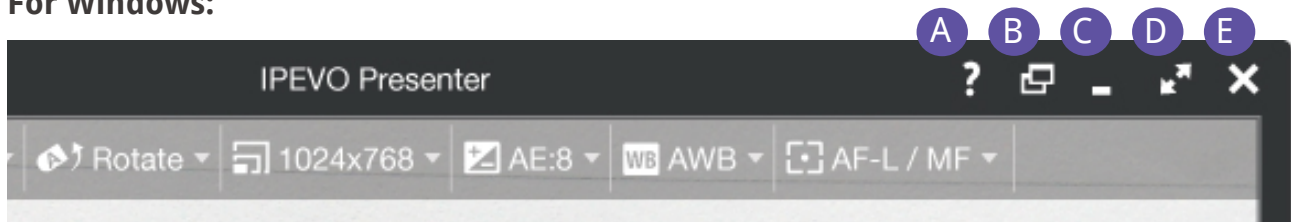
Once IPEVO Presenter is installed and opened, you will see the following functions in the status bar (for Mac) or at the top right-hand side of the Presenter's window (for Windows).

For Mac:



- A File -> New Presenter Window**
Generates a new Presenter window for multiple doc cams support. Use the "Select Video Device" function in Camera Mode to select the appropriate doc cam for each window.
- B File -> Import Images**
Import jpeg or png images into Presenter for viewing or for OCR and Text-To-Speech (see section on "Text-To-Speech (TTS)" for details).
- C Window -> Minimize**
Minimize the Presenter window.
- D Window -> Zoom**
Clicking this will cause the Presenter window to fit your screen size.
- E Help -> Presenter Help**
Directs you to the IPEVO support page with downloads, FAQ and a discussion page.

For Windows:



- A Help**
Directs you to the IPEVO support page with downloads, FAQ and a discussion page.
- B Create New Presenter Window**
Generates a new Presenter window for multiple doc cams support. Use the "Select Video Device" function in Camera Mode to select the appropriate doc cam for each window.
- C Minimize**
Minimize the Presenter window.
- D Full Screen**
Clicking this will cause the Presenter window to occupy the entire screen. This is useful for lessons and presentations.
- E Close**
Exit Presenter.

Camera Mode

The default mode when starting IPEVO Presenter is Camera Mode, selectable with the top tab on the left-hand side. This mode displays the live image coming from the doc cam connected to your computer. You can also customize your image in several ways using the pulldown menus and buttons.



- A Zoom**
- B Mirror**
- C Rotate**
- D Resolution**
- E Exposure**
- F White Balance**
- G AF Lock / Manual Focus**
- H Full Screen**
- I Select Video Device**
- J Adjust**
- K Snapshot**
- L Auto (Interval Shooting)**
- M Record**
- N Freeze**
- O Display Mode**
- P Focus and Focus Indicator**

Top Menu Functions

- A Zoom**

Digitally zoom in continuously on the subject. 1x (normal) to 12x zoom is possible.
- B Mirror**

Flip the image along a horizontal axis, flop the image along a vertical axis, or select both Horizontal and Vertical for an image that is flipped and flopped. The default is "Off", i.e. no mirroring.
- C Rotate**

Rotate the image 360 degrees. Slide the green marker to your desired degree, use the arrow keys for incremental rotations, or use the preset buttons for instant 90-, 180- and 270-degree rotations. Press the Reset key to return to the original position. Both Mirror and Rotate are useful for orienting text so that it's readable.
- D Resolution**

Change your resolution on the fly. Higher resolutions offer a higher-quality image, but they consume more computing power. If your image stutters or suffers from a strobe-like effect, consider lowering the resolution to increase the frame rate for a smoother image.
- E Exposure**

Change your image exposure from 1 (darkest) to 15 (brightest). The default value is 8, i.e. medium brightness. If your image is too dark, consider increasing the exposure. Check the AE-Lock button to lock your camera's exposure to the current value.
- F White Balance**

Control the color temperature of the image. The WB slider may be dragged to higher (or lower) color temperatures to correct the current low (or high) white balance environment to produce more neutral colors. Your selection will automatically lock into place with WB-Lock.

Note - White balance adjustment is only available when IPEVO Presenter is used with Ziggi-HD Plus.
- G AF Lock / Manual Focus**

When the Autofocus (AF) Lock is unchecked, your camera will try to find the best focus for a sharp image. If you prefer manual focus instead, check the "AF-Lock" box, drag the slider to your desired focus, from very close (the flower icon) to very far away (the infinity icon), and the focus will then be locked to the current value. To return to Autofocus, uncheck the "AF-Lock" box.

Note - Manual focus is only available on selected IPEVO document cameras.
- H Full Screen**

Clicking this will cause the Presenter window to occupy the entire screen. Click again to exit full screen.

Bottom Menu Functions

I Select Video Device

Select the video device Presenter should use. If properly connected, your device's name should appear here.

Special note for iZiggi-HD users – As a wireless document camera, iZiggi-HD connects to your computer via Wi-Fi. If you are connecting iZiggi-HD to your computer for the first time, it can take a minute or two for it to show up in the "Select Video Device" menu. Please allow iZiggi-HD to show up completely before selecting it as your video device.

J Adjust

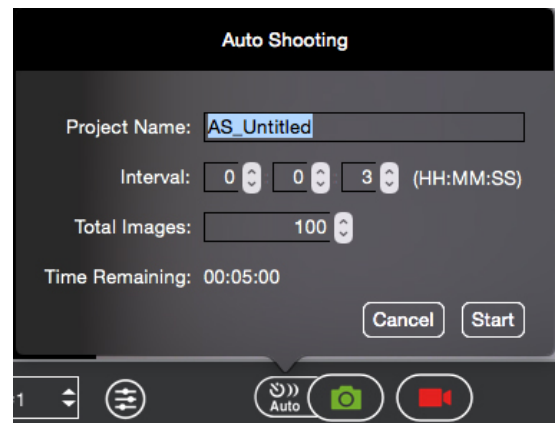
Pressing Adjust will take you to a Video Control menu with several camera settings you can adjust by dragging the corresponding sliders.

K Snapshot

Take a snapshot of the current image. The snapshot will be saved on your hard drive as a JPG file and can be managed in Review Mode.

L Auto (Interval Shooting)

Clicking this will bring up a window allowing you to set up an automated shooting schedule. Once set, Presenter will take snapshots automatically at intervals of your choosing. This tool is ideal for archiving different materials quickly, for time-lapse photography, and for stop-motion videos.



- **Project Name**
Name your automated snapshot series. It can be accessed in Review Mode.
- **Interval**
Type in numbers or tap the arrow keys to set your desired interval between snapshots in hours (HH), minutes (MM) and seconds (SS).
- **Total Images**
Type in numbers or tap the arrow keys to set the total number of images (snapshots) you'd like to take in your automated snapshot series.
- **Time Remaining**
Indicates the total time left for the current automated snapshot series to complete.
- **Start**
Press Start to begin the automated snapshot series according to the parameters you've set.

M Record

Record a video of the current video feed. Once you press Record, it will turn into the Stop button, which you can press to stop the video recording. The video file will be saved to your hard drive and can be managed in Review Mode.

N Freeze

Pause the live image. Press again to unpause and return to live action.

O Display Mode

Press to make visual overlays disappear so you have an uncluttered image suitable for presentation. In its default setting, the top menu elements and Focus and Focus Indicator are displayed. By pressing once on the "Display Mode" button, gridlines will appear. Press again to display only the gridlines, and not the menu elements and Focus Indicator. Press a third time to make the gridlines, menu elements and Focus Indicator disappear. The cycle will then start over again with a fourth press.

P Focus and Focus Indicator

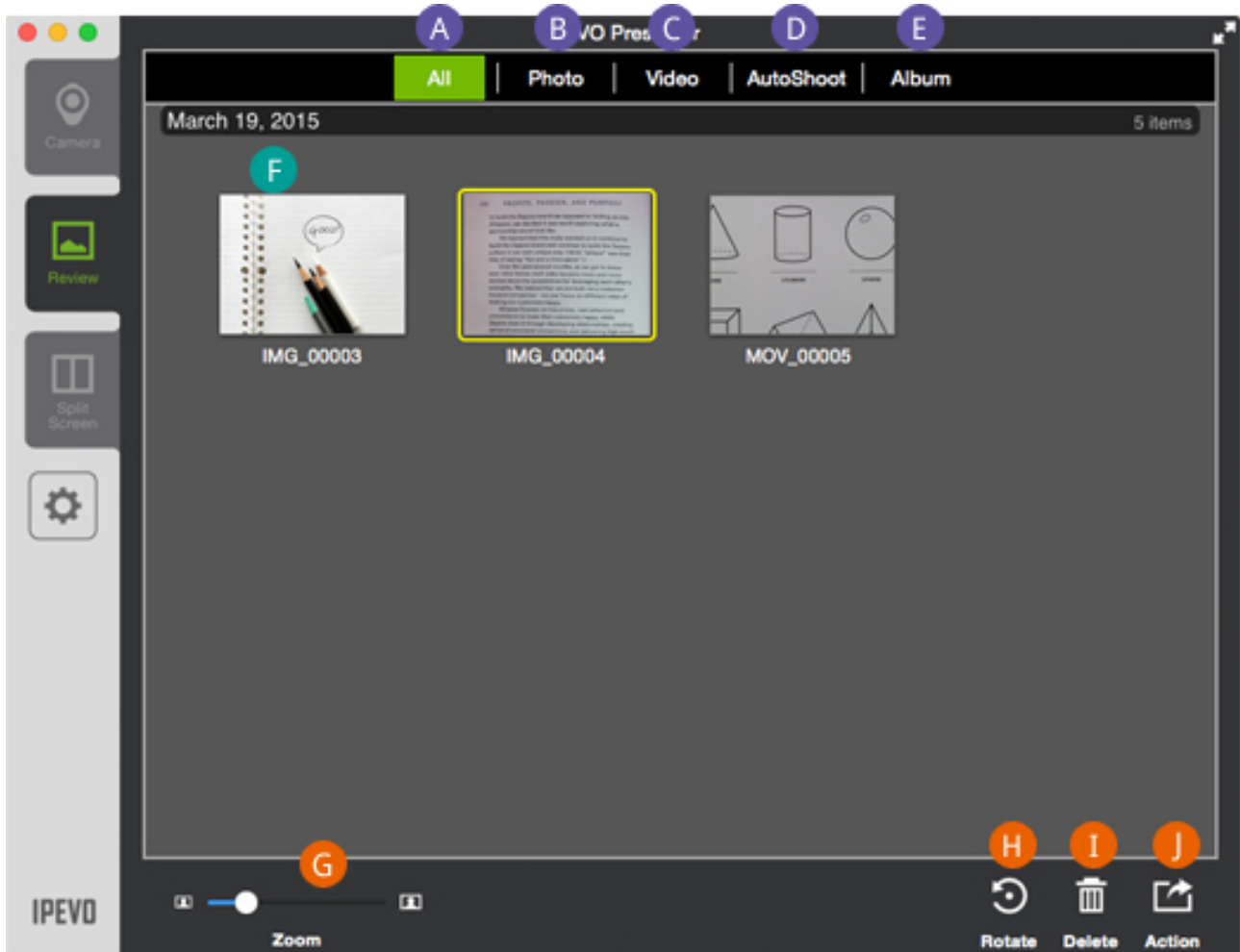
Indicates whether your doc cam is in Single focus mode (AF-S) or Continuous focus mode (AF-C). Pressing the crosshairs will cause your doc cam to find a new focus.

When focusing, four corners of a red box will appear in the center of the screen, followed by a beep sound. That means the camera is attempting to focus. The live image may zoom in and out slightly during the focusing process. When the doc cam is done focusing, the red corners will turn green, and you will hear a brief sound effect.



Review Mode

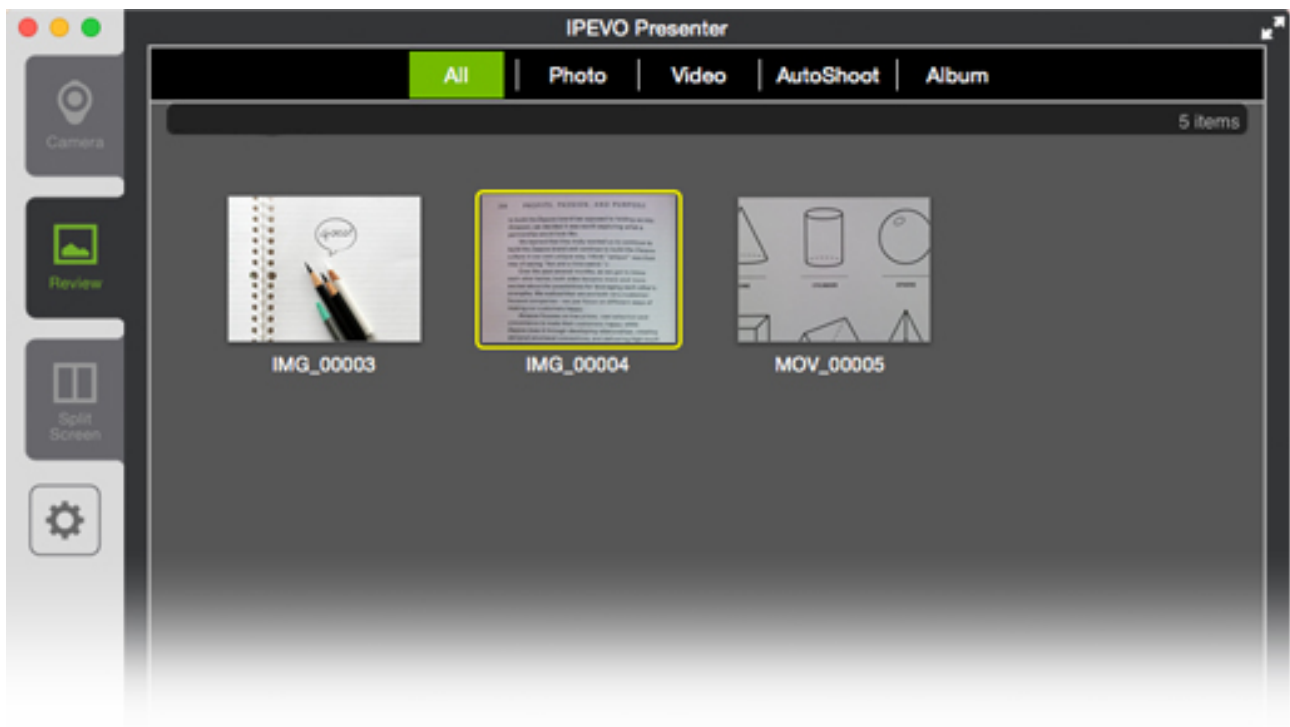
Select the second tab on the left-hand side to enter Review Mode. In this mode, you can view and manage the snapshots (photos) and videos you've taken with your doc cam.



- A All**
- B Photo**
- C Video**
- D AutoShoot**
- E Album**
- F Main Window Functions**
- G Thumbnail Size (or Zoom)**
- H Rotate**
- I Delete**
- J Action**

Top Menu Functions

- A ALL**
Both photos and videos will be displayed.
- B Photo**
Display only photos.
- C Video**
Display only videos.
- D AutoShoot**
Display only the automated snapshot series you've taken.
- E Album**
Display only the photo albums you've created.



F Main Window Functions

Click on an image to select that photo or video, which will become highlighted in a bright yellow. Use Shift+Click and Command+Click to select multiple files.

Double-click on the selected photo or video to make it larger and to enter a slideshow mode. Click the left or right arrows in the slideshow to view other photos or videos in the library. Click the Back arrow key (in green) to exit the slideshow.

You can right-click on an image to bring up Rotate, Delete, Rename, Add to Album, Export to and Text-To-Speech functions.

Bottom Menu Functions

G Thumbnail Size (or Zoom)

Adjust the slider to alter the size of the thumbnails being displayed.

H Rotate

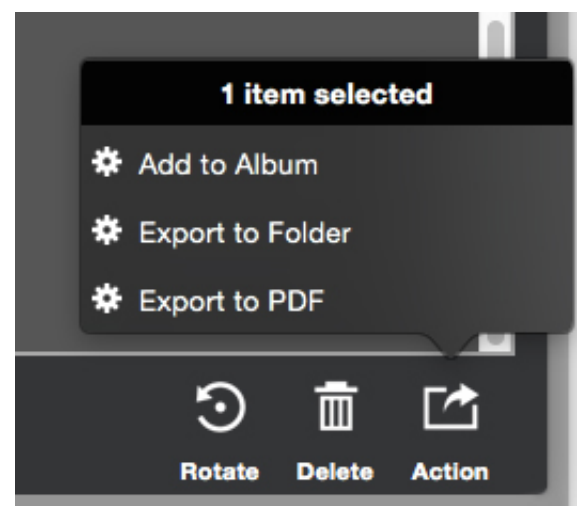
Rotate the selected photo(s) in 90-degree increments counter-clockwise. This rotation will permanently alter the image.

I Delete

Permanently delete the selected files from your hard drive. A pop-up window will confirm your decision.

J Action

Export the selected photo(s) or video(s) to a desired location on your hard drive. You can also export images as a PDF file to your desired location. Or you can add the selected photo(s) or video(s) to a new album or an existing album.

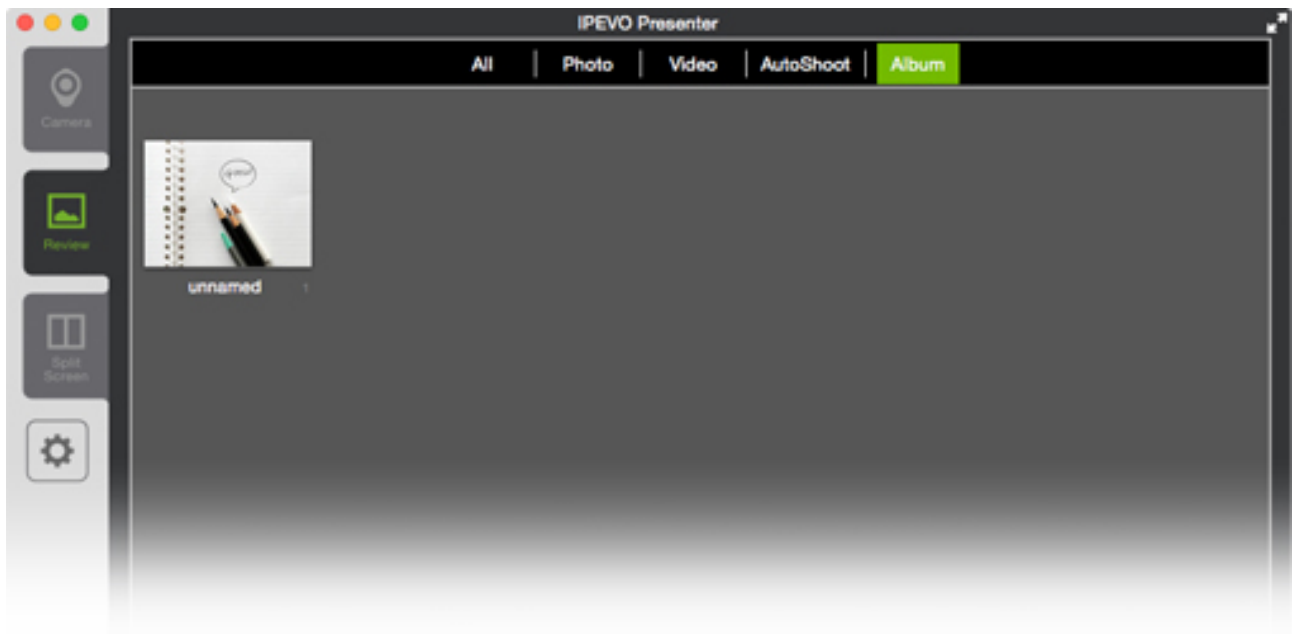


Album

Press Album on the top menu bar to access your photo albums. Albums are arranged according to the date they are created. To rename an album, click twice on the current name to bring up an editable text field. Or, right-click on the album and select Rename.

Albums can be exported as PDF files using the Action function in the bottom-right corner.

To add photos to an album, select your photo(s) and then right-click. Choose "Add to Album." You may either add your selected photos to an existing album, or add them to a new album. The default name for a new album is "unnamed." Change the album's name as described earlier in this section.



Multiple Doc Cams Support

Presenter now supports multiple document cameras. You can generate a separate Presenter window for each of the document camera connected to your computer. To do so, press Command+N (Mac) or Ctrl+N (Windows). A new Presenter window will be created. Use the "Select Video Device" function in Camera Mode to select the appropriate document camera for each of your Presenter window.

You can also assign the same document camera to two separate Presenter windows. Simply assign the same document camera for each window's "Select Video Device" function. For one example of how to use this function, you can have one window zoomed in to show details, and the other unzoomed to show the entire object.

Note - High computer performance is required when two document cameras are connected at high resolutions. If the image freezes or lags in this setup, consider lowering the resolution.



Split Screen Mode

Presenter also supports Split Screen Mode. Two document cameras can be connected and presented in splitscreen, or a single document camera's video feed can be presented in splitscreen. Functions like zoom, resolution change, rotate and more can be changed independently in each splitscreen pane.

Note - Do not use a USB hub for this purpose. You'll need to plug the two document cameras into the USB ports on your computer. If the second screen shows no live image, try a different USB port.

To enter Splitscreen Mode, click on the "Split Screen" tab on the left.



A Select Camera 1

B Select Camera 2

C Image Adjustments/
Adjust Camera

D Horizontal/Vertical

A Select Camera 1

Select the camera for the first splitscreen pane.

B Select Camera 2

Select the camera for the second splitscreen pane. It can be the same or different from Camera 1.

C Image Adjustments/Adjust Camera

Within the Select Camera pop-up, hit Image Adjustments/Adjust Camera to tweak the image coming from the selected camera.

D Horizontal/Vertical

Splitscreen can be presented either horizontally or vertically depending on your selection.

Each splitscreen pane can be further adjusted by hitting the ">" icon in the upper right to bring up more options. Hit "<" again to collapse the options.



A Zoom

Digitally zoom the image.

B Rotate

Rotate the image.

C Resolution

Change the resolution of the image.

D Exposure

Brighten or darken the image.

E Focus Adjustment

Drag the Focus slider to the desired focus, which will lock into place. To return to Autofocus, uncheck the "AF-Lock" box.

Note - High computer performance is required when two document cameras are connected at high resolutions. If the image freezes or lags in this setup, consider lowering the resolution.

Settings (Mac)

Click on the gear icon on the left-hand side (below the mode tabs) to enter Settings.



A General **B** Snapshot **C** Recording **D** Advanced

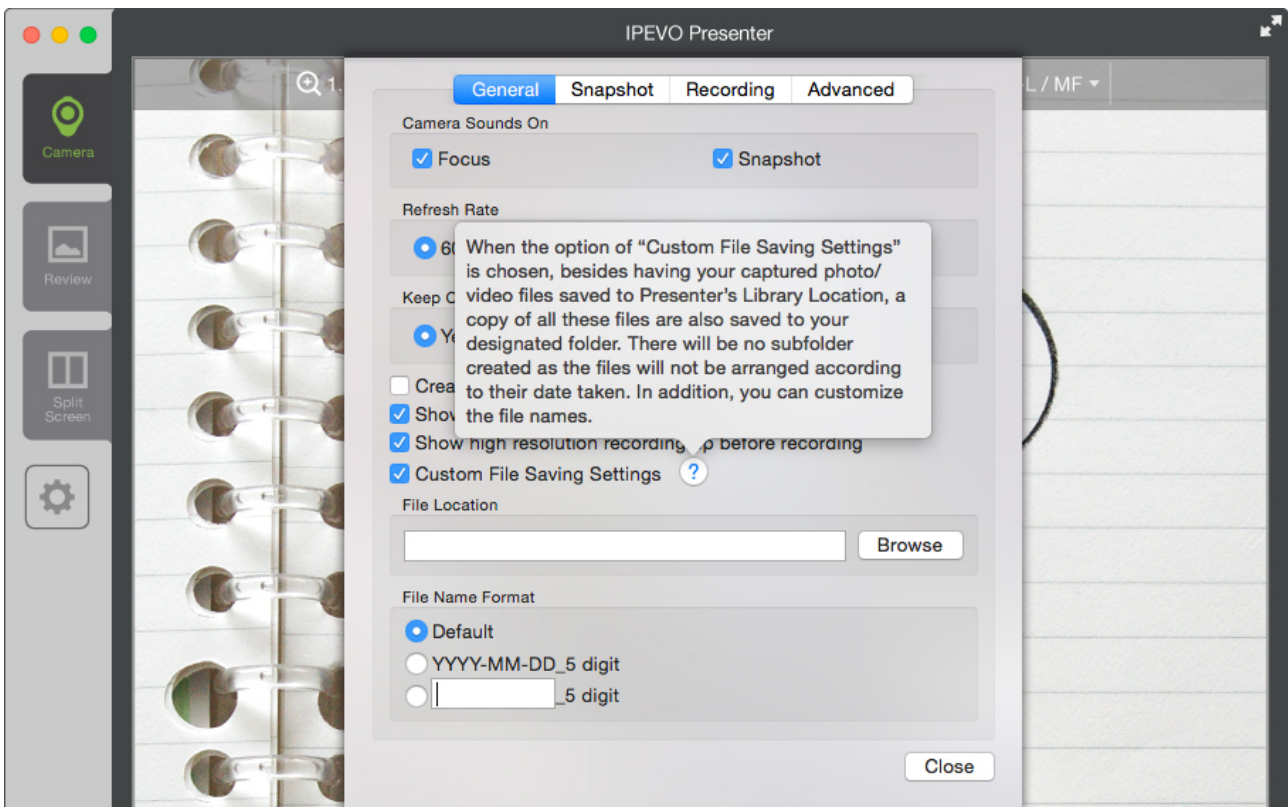
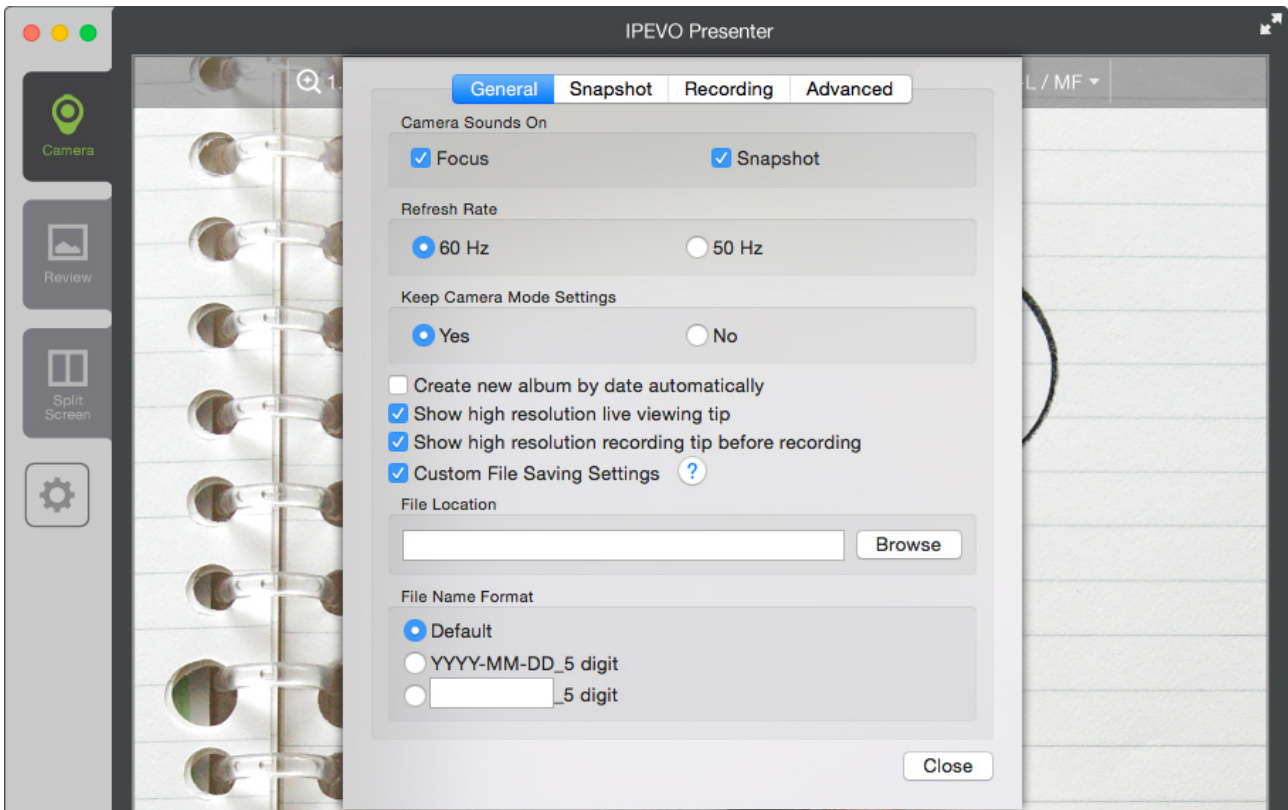
A General

- **Camera Sounds On**
By default, there are brief sound effects when focusing and when taking a snapshot. Uncheck these options to silence these effects.
- **Refresh Rate**
Choose between 60Hz and 50Hz depending on your computer monitor's refresh rate.
- **Keep Camera Mode Settings**
By default, settings you change will stay that way when you launch Presenter in the future. Select "No" to return to original settings each time you launches Presenter.

- **Create new album by date automatically**
When checked, any snapshots you take will automatically be placed within an album according to the date when the snapshot was taken. Uncheck to prevent the automatic creation of albums.
- **Show high resolution live viewing tip**
When checked, Presenter will pop up a window when you choose a higher resolution with the following text: "A higher resolution will increase demands on your CPU. If you are experiencing laggy or frozen video streaming, please reduce the resolution."
- **Show high resolution recording tip before recording**
When checked, Presenter will pop up a window when you start recording with the following text: "Using a higher resolution to record videos will increase demands on your CPU. If you are experiencing laggy or frozen video streaming, or the audio and video are out of sync, please reduce the resolution."

- **Custom File Saving Settings**

When checked, you will be able to save a copy of your photo/video files to a designated folder, and to customize file names. For more information on this option, click on Help (question mark icon) beside the option.





B Snapshot

- **Instant Preview**

Preview the snapshot you've just taken before returning to the live view. Default is "Off" (no preview). Choose between a two-second preview and four-second preview.

- **Snapshot Timer**

Once you press the snapshot button, tell the camera to wait either 3 seconds or 10 seconds before taking the snapshot. Default is "Off" (no delay between button press and captured snapshot).



C Recording

- **Resolution**
Choose Auto Detect to have Presenter determine the best resolution to record your video. Or, you may choose your own custom resolution.
- **Audio Device**
Select your preferred audio device from the pulldown menu for use in conjunction with your doc cam.



D Advanced

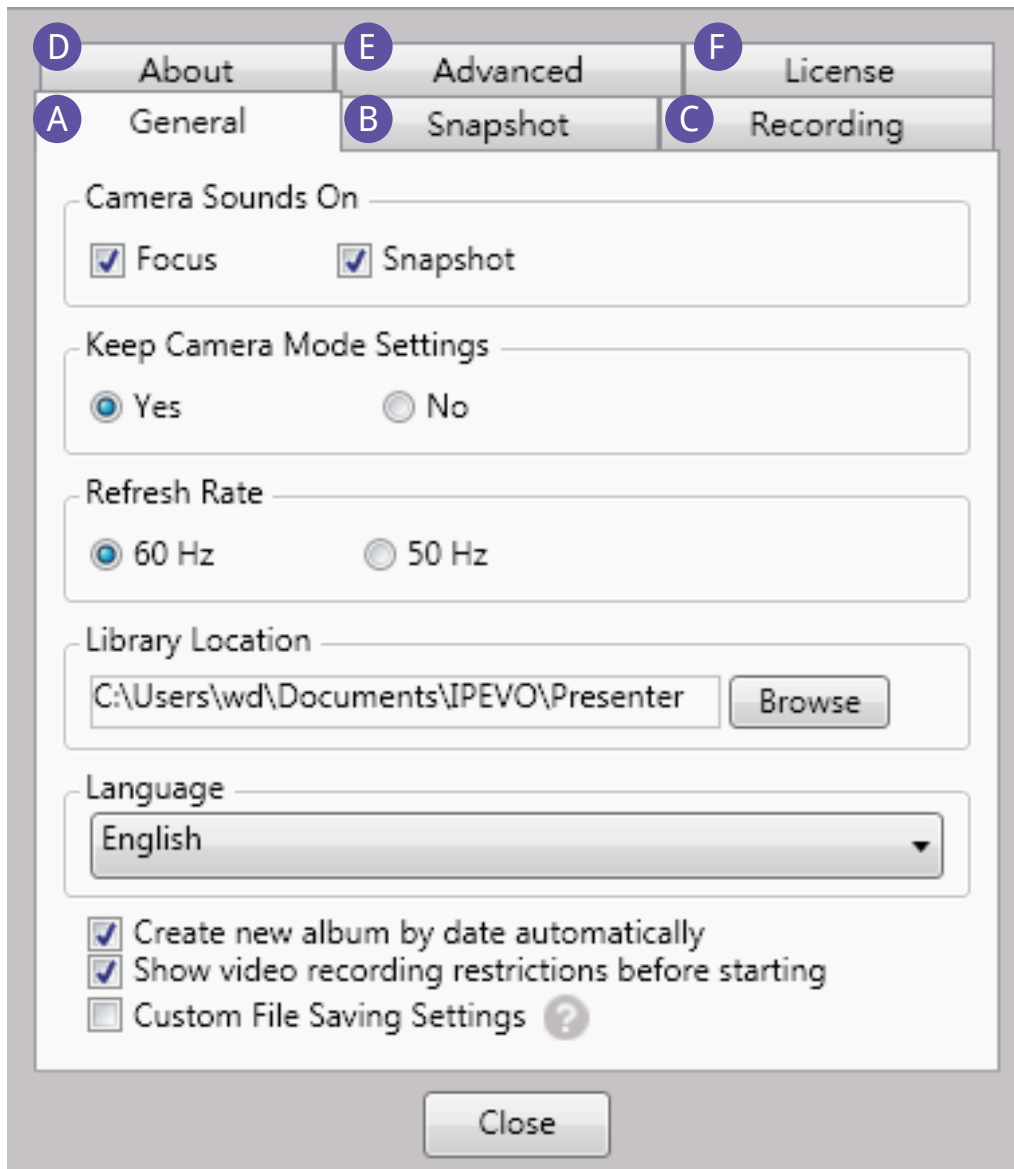
- **Display TTS (Text-To-Speech) button in Camera Mode**

When checked, a TTS button will be displayed in Camera Mode. You can click on the button to take a snapshot of a text and send it for OCR and Text-To-Speech. For more information on this option, see section on "Text-To-Speech (TTS)".

Press Close to apply any changes to Settings you have made.

Settings (Windows)

Click on the gear icon on the lower left-hand corner to enter Settings.



- A** General
- B** Snapshot
- C** Recording
- D** About
- E** Advanced
- F** License

A General

- **Camera Sounds On**

By default, there are brief sound effects when focusing and when taking a snapshot. Uncheck these options to silence these effects.

- **Keep Camera Mode Settings**

By default, settings you change will stay that way when you launch Presenter in the future. Select "No" to return to original settings each time you launches Presenter.

- **Refresh Rate**

Choose between 60Hz and 50Hz depending on your computer monitor's refresh rate.

- **Library Location**

Change the location on your hard drive where snapshots and videos taken in Presenter are stored.

- **Language**

Choose your desired language for menu text from the pulldown menu.

- **Create new album by date automatically**

When checked, any snapshots you take will automatically be placed within an album according to the date when the snapshot was taken. Uncheck to prevent the automatic creation of albums.

- **Show video recording restrictions before starting**

When checked, Presenter will pop up a window when you start recording with the following text: "Please note that the highest resolution available in recording mode is 1280 x 720. The Zoom, Mirror, and Rotate functions are not supported in recording mode."

- **Custom File Saving Settings**

When checked, you will be able to save a copy of your photo/video files to a designated folder, and to customize file names. For more information on this option, click on Help (question mark icon) beside the option.

About	Advanced	License
General	Snapshot	Recording

Camera Sounds On

Focus Snapshot

Keep Camera Mode Settings

Yes No

Refresh Rate

60 Hz 50 Hz

Library Location

C:\Users\wd\Documents\IPEVO\Presenter

Language

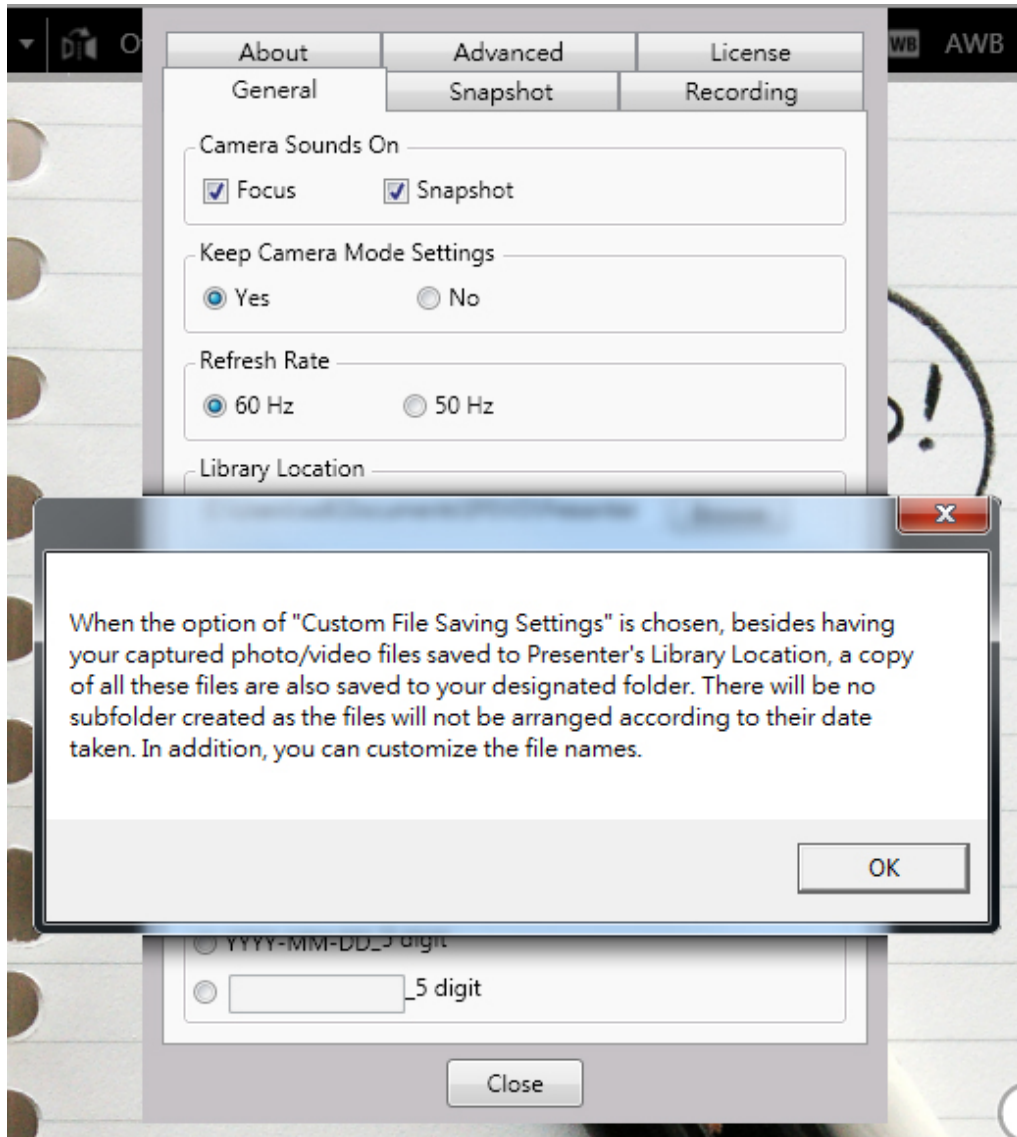
English

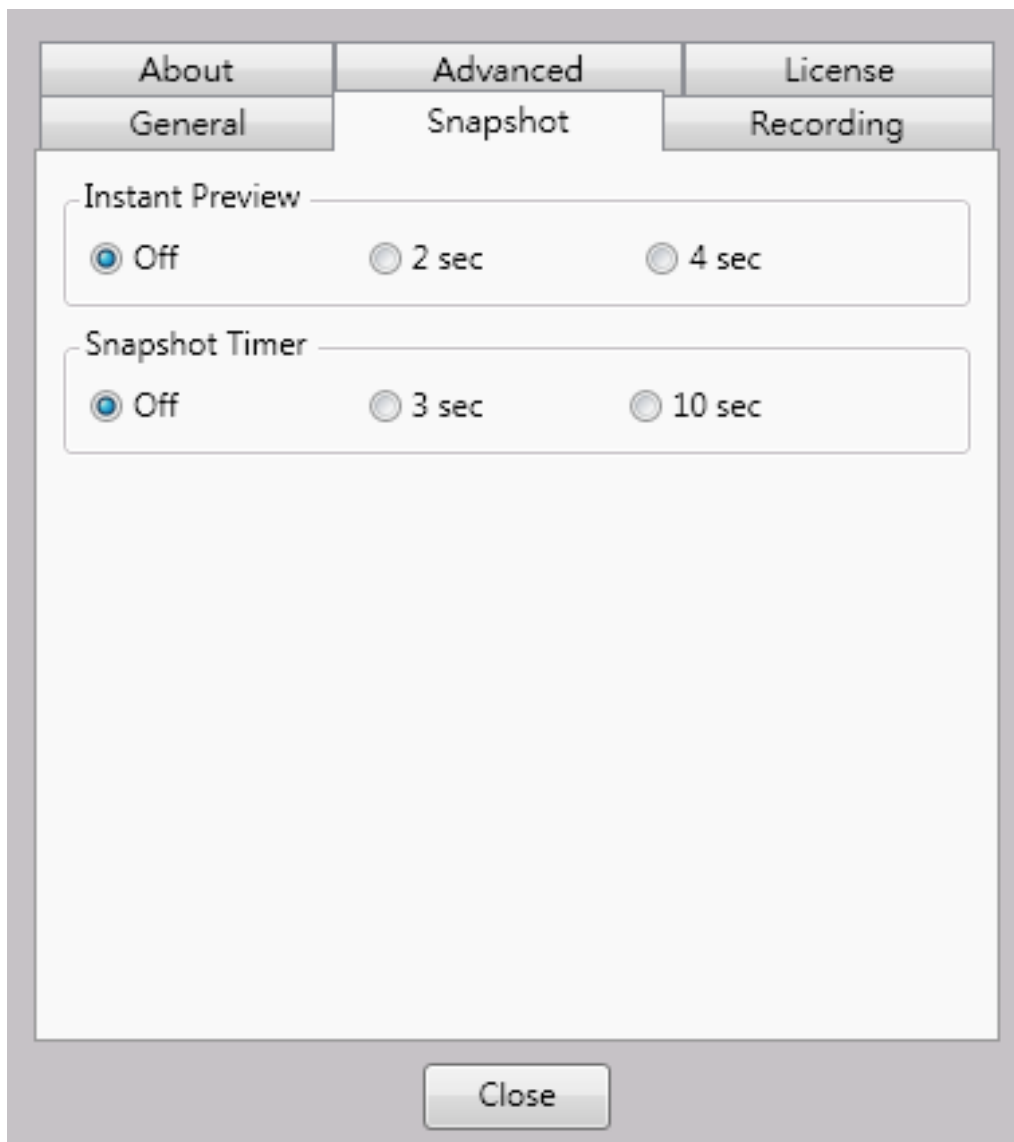
Create new album by date automatically
 Show video recording restrictions before starting
 Custom File Saving Settings ?

File Location

File Name Format

Default
 YYYY-MM-DD_5 digit
 _5 digit





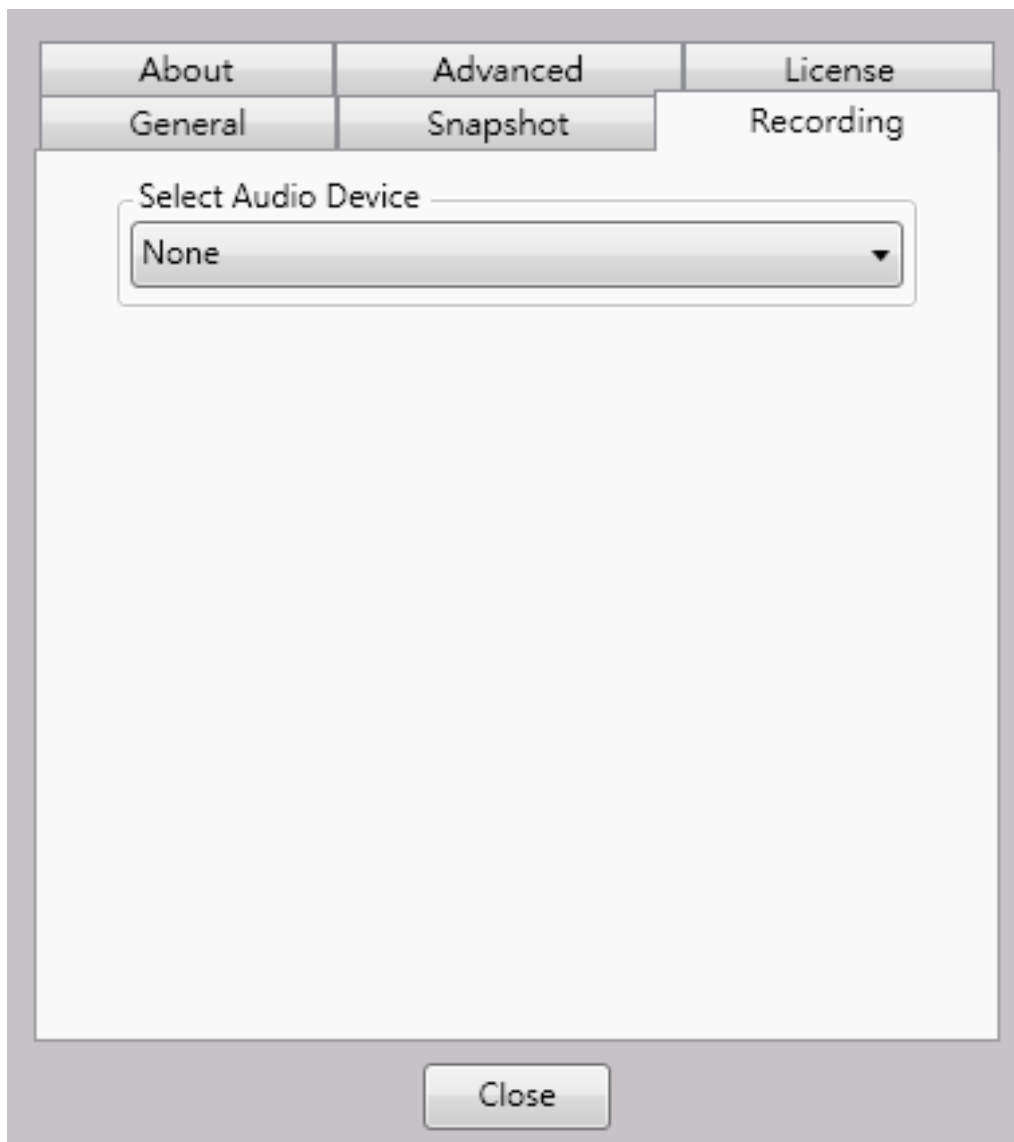
B Snapshot

- **Instant Preview**

Preview the snapshot you've just taken before returning to the live view. Default is "Off" (no preview). Choose between a two-second preview and four-second preview.

- **Snapshot Timer**

Once you press the snapshot button, tell the camera to wait either 3 seconds or 10 seconds before taking the snapshot. Default is "Off" (no delay between button press and captured snapshot).



C Recording

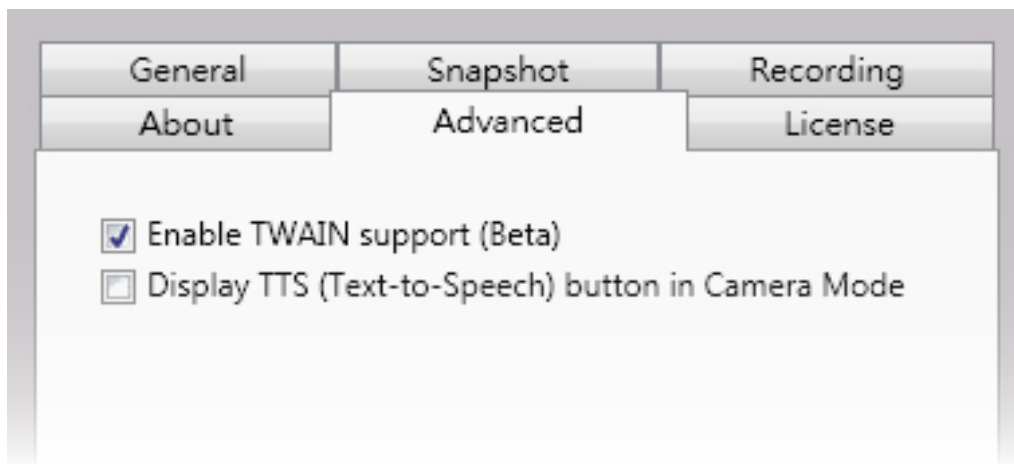
- **Select Audio Device**

Select your preferred audio device from the pulldown menu for use in conjunction with your doc cam.



D About

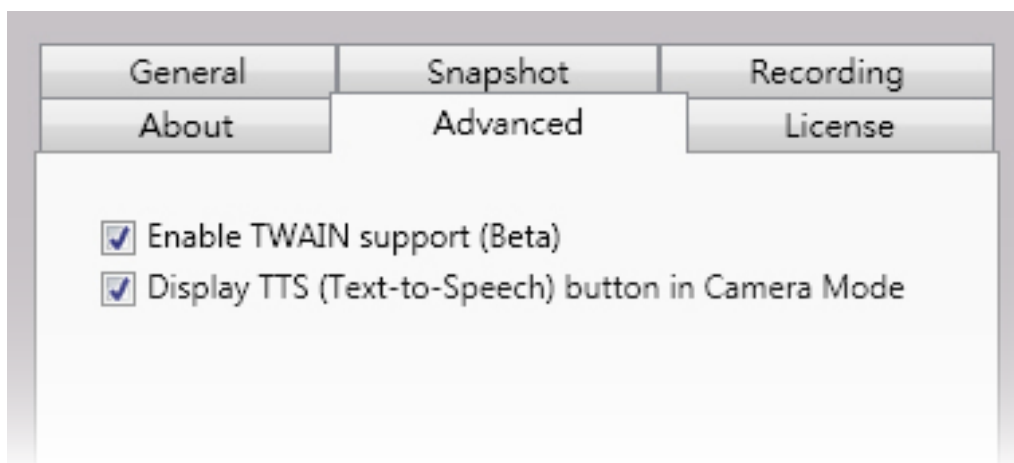
- This tab lists the version of Presenter you are using, its End User License Agreement (EULA) and Privacy Policy. Check support.ipevo.com frequently to ensure you have the latest version of Presenter.



E Advanced

- **Enable TWAIN support** – When checked, TWAIN support will be enabled, turning the IPEVO doc cam you're using into a TWAIN-compatible scanner. A Green TWAIN icon will appear at the bottom right hand corner of Presenter's Camera Mode. You'll be able to use any IPEVO doc cams together with the Presenter as a virtual scanner for most 3rd party TWAIN-based scanning software.





- **Display TTS (Text-To-Speech) button in Camera Mode**

When checked, a TTS button will be displayed in Camera Mode. You can click on the button to take a snapshot of a text and send it for OCR and Text-To-Speech. For more information on this option, see section on “Text-To-Speech (TTS)”.

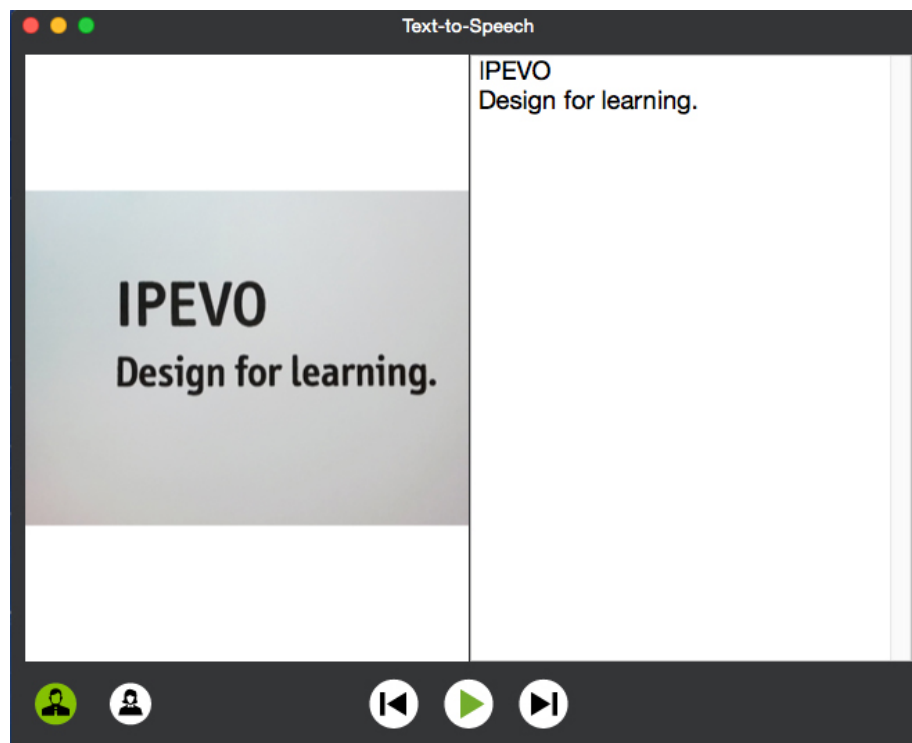
Press Close to apply any changes to Settings you have made.



Text-To-Speech (TTS)

Presenter now includes a Text-To-Speech function (for English language only) that allows users to take a snapshot of a text document and immediately OCR it into an editable text for reading aloud by the computer.

By default, the Text-To-Speech (TTS) function is disabled. You'll need to enable it by going to the "Advanced" tab under "Settings" icon and click on the option "Display TTS (Text-To-Speech) button in Camera Mode". A TTS button will then appear beside the "Record" button in Presenter's Camera Mode. You can now place any English text under your doc cam, focus it, press the TTS button and let Presenter take a snapshot of the text for OCR in a pop-up window. All snapshots taken will be saved to a "Text-to-Speech" album.



After the OCR has completed, press "Start" to start listening to the text. Press "Next" to skip to the next sentence or "Previous" to jump back to the previous sentence. If your computer has both male and female voices installed, you have the option of choosing either one using the "Male" or "Female" voice button. Otherwise, the text will be read aloud using the default voice available on your computer.

Besides pressing the TTS button, there's another way to access Text-To-Speech: Right click on any existing text images in Review Mode and choose "Text-To-Speech". And if you are using a Mac computer, you can drag and drop any text images into Presenter's Review Mode or import them into Presenter (see section on "Status Bar Functions (Mac)") for Text-To-Speech purpose.

Hotkeys

Please familiarize yourself with common Presenter functions accessible via hotkeys.

Function	Windows & Mac
Zoom in and Zoom out	-, =
Zoom reset	0
Mirror (Horizontal) and Mirror (Vertical)	h, v
Rotate	left, right
Rotation reset	r
Exposure change	up, down
Exposure reset	e
Exposure lock	a
Manual focus	alt+up, alt+down (Windows)/ option+up, option+down (Mac)
Autofocus lock	m
Focus	f
Freeze/Resume	p
Toggle display mode	d
Take a snapshot	space
Full Screen/Windowed	alt+enter(Windows)/ option+enter (Mac)
Exit Full Screen	esc