



# IPEVO Presenter for Mac

## Quick Start Guide

### Introduction

IPEVO Presenter for Mac is designed for use with the IPEVO line of document cameras, including the Point 2 View, Ziggi-HD, iZiggi-HD and VZ-1. Presenter displays the live video feed from your camera. It's an ideal solution to send live video from your computer to your projector for lessons and presentations. Presenter also contains numerous handy tools and customizations to help you get the most from your camera.

This guide will help familiarize you with Presenter's functions and settings.

### Downloading IPEVO Presenter

Visit [support.ipevo.com](http://support.ipevo.com) for the latest version of Presenter. Click the download link for the Mac version of Presenter, then follow the prompts to complete installation.

Presenter is free to use and may be installed on multiple computers.

### Questions? Comments?

If you've read this guide and still have questions, we're ready to help. Email [cs@ipevo.com](mailto:cs@ipevo.com) and a member of our Customer Support team will be happy to assist you.



## Camera Mode

The default mode when starting IPEVO Presenter is Camera mode, selectable with the top tab on the left-hand side. This mode displays the live image coming from the doc cam connected to your computer. You can also customize your image in several ways using the pulldown menus and buttons.



- A Zoom**
- B Mirror**
- C Rotate**
- D Resolution**
- E Exposure**
- F White Balance**
- G AF Lock / Manual Focus**
- H Full Screen**
- I Select Video Device**
- J Adjust**
- K Snapshot**
- L Auto (Interval Shooting)**
- M Record**
- N Freeze**
- O Display Mode**
- P Focus and Focus Indicator**

# Top Menu Functions

- A Zoom**

Digitally zoom in on the subject. 1x (normal) to 8x zoom is possible.
- B Mirror**

Flip the image along a horizontal axis, flop the image along a vertical axis, or select both Horizontal and Vertical for an image that is flipped and flopped. The default is Off, i.e. no mirroring.
- C Rotate**

Rotate the image 360 degrees. Slide the green marker to your desired degree, use the arrow keys for incremental rotations, or use the preset buttons for instant 90-, 180- and 270-degree rotations. Press the Reset key to return to the original position. Both Mirror and Rotate are useful for orienting text so that it's readable.
- D Resolution**

Change your resolution on the fly. Higher resolutions offer a higher-quality image, but they consume more computing power. If your image stutters or suffers from a strobe-like effect, consider lowering the resolution to increase the frame rate for a smoother image.
- E Exposure**

Change your image exposure from 1 (darkest) to 15 (brightest). The default value is 8, i.e. medium brightness. If your image is too dark, consider increasing the exposure. Check the AE - Lock button to lock your camera's exposure to the current value.
- F White Balance**

Control the color temperature of the image. The WB slider may be dragged to higher color temperatures to make the image cooler/bluer, or to lower temperatures to make the image warmer/redder. Your selection will automatically lock into place with WB – Lock. (\*White Balance available on select IPEVO document cameras only)
- G AF Lock / Manual Focus**

If Autofocus (AF) Lock is checked, your camera will try to find the best focus for a sharp image. If you prefer manual focus instead, drag the slider to your desired focus, from very close (the flower icon) to very far away (the infinity icon). To return to Autofocus, uncheck the "AF-Lock" box. (\*Manual focus available on select IPEVO document cameras only)
- H Full Screen**

Clicking this will cause the Presenter window to occupy the entire screen. This is useful for lessons and presentations.

## Bottom Menu Functions

### I **Select Video Device**

Select the video device Presenter should use. If properly connected, your device's name should appear here.

**Special note for iZiggi-HD users** – As a wireless document camera, iZiggi-HD connects to your computer via Wi-Fi. First-time connections can take a minute or two to be reflected in the Select Video Device box, so please allow for this delay before selecting iZiggi-HD as your video device.

### J **Adjust**

Pressing Adjust will take you to a Video Control menu with several camera settings you can adjust by dragging the corresponding sliders.

### K **Snapshot**

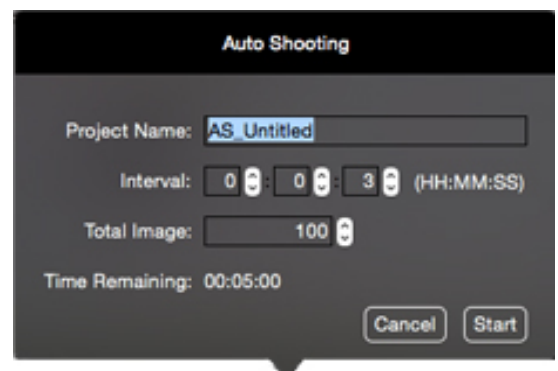
Take a snapshot of the current image. The snapshot will be saved on your hard drive as a JPG file and can be managed in Review mode.

### L **Auto (Interval Shooting)**

Clicking this will bring up a window allowing you to set up an automated shooting schedule.

Once set, Presenter will take snapshots automatically at intervals of your choosing.

This tool is ideal for archiving different materials quickly, for time-lapse photography, and for stop-motion videos.



- **Project Name**

Name your automated snapshot series. It can be accessed in Review mode.

- **Interval**

Type in numbers or tap the arrow keys to set your desired interval between snapshots in hours (HH), minutes (MM) and seconds (SS).

- **Total Images**

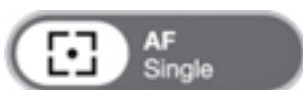
Type in numbers or tap the arrow keys to set the total number of images (snapshots) you'd like to take in your automated snapshot series.

- **Time Remaining**

Indicates the total time left for the current automated snapshot series to complete.

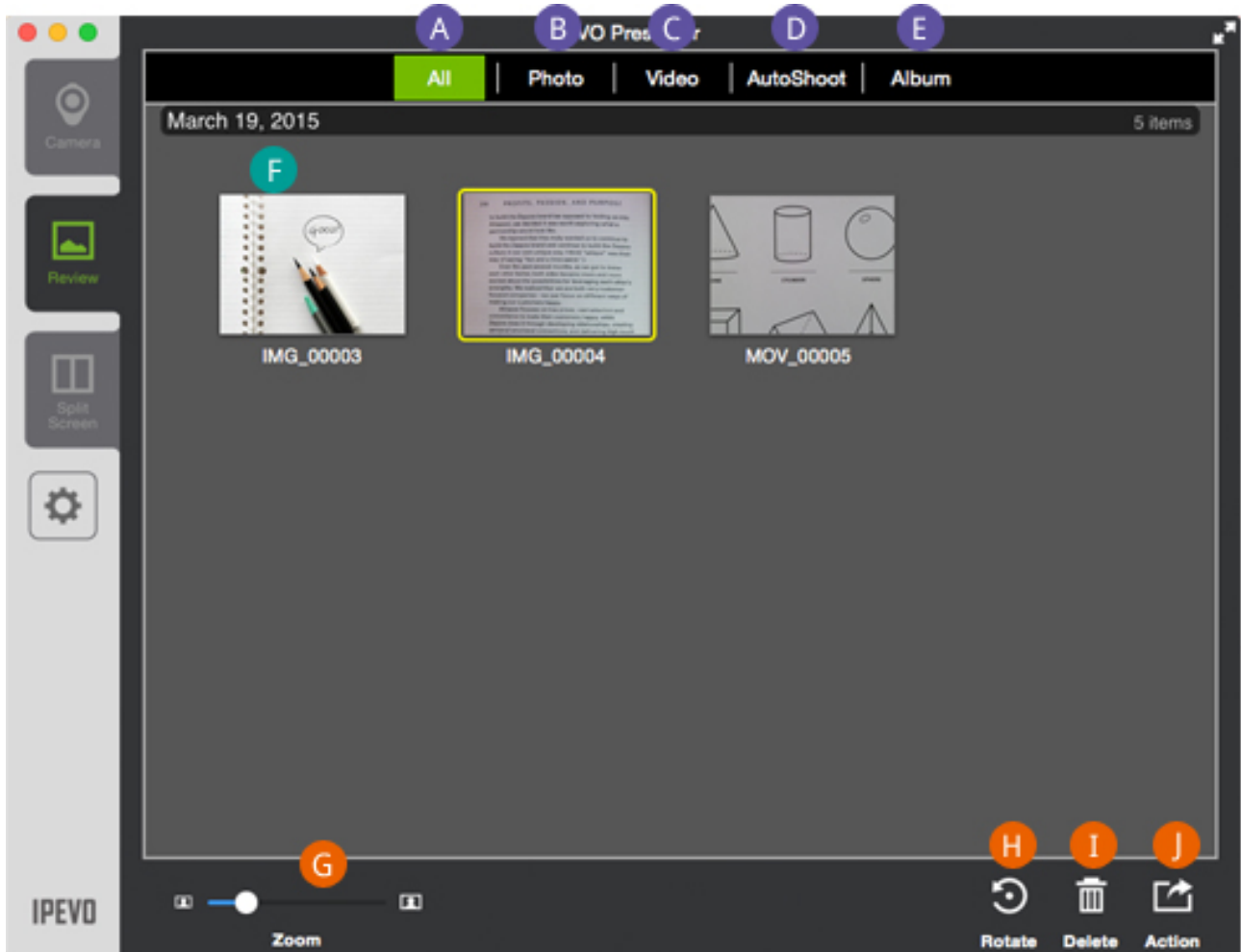
Press Start to begin the automated snapshot series according to the parameters you've set.

- M Record**  
Record a video of the current video feed. Once you press Record, it will turn into the Stopbutton, which you can press to stop the video recording. The video file will be saved to your hard drive and can be managed in Review mode.
  
- N Freeze**  
Pause the live image. Press again to unpause and return to live action.
  
- O Display Mode**  
Press to make visual overlays disappear so you have an uncluttered image suitable for presentation. Press once to display the menu elements only. Press again to make the menu elements and a grid appear. Press a third time to display only a grid and not the menus. Press a fourth time to make both the grid and menu elements disappear. The cycle will then start over again with a fifth press.
  
- P Focus and Focus Indicator**  
Indicates whether your doc cam is in Single focus mode (AF-S) or Continuous focus mode (AF-C). Pressing the crosshairs will cause your doc cam to find a new focus.  
When focusing, four corners of a red box will appear in the center of the screen and a beep will sound, letting you know your camera is attempting to focus. The image may appear to slightly zoom in and out. When the doc cam is done focusing, the red corners will change to green corners, and there will be a brief sound effect.



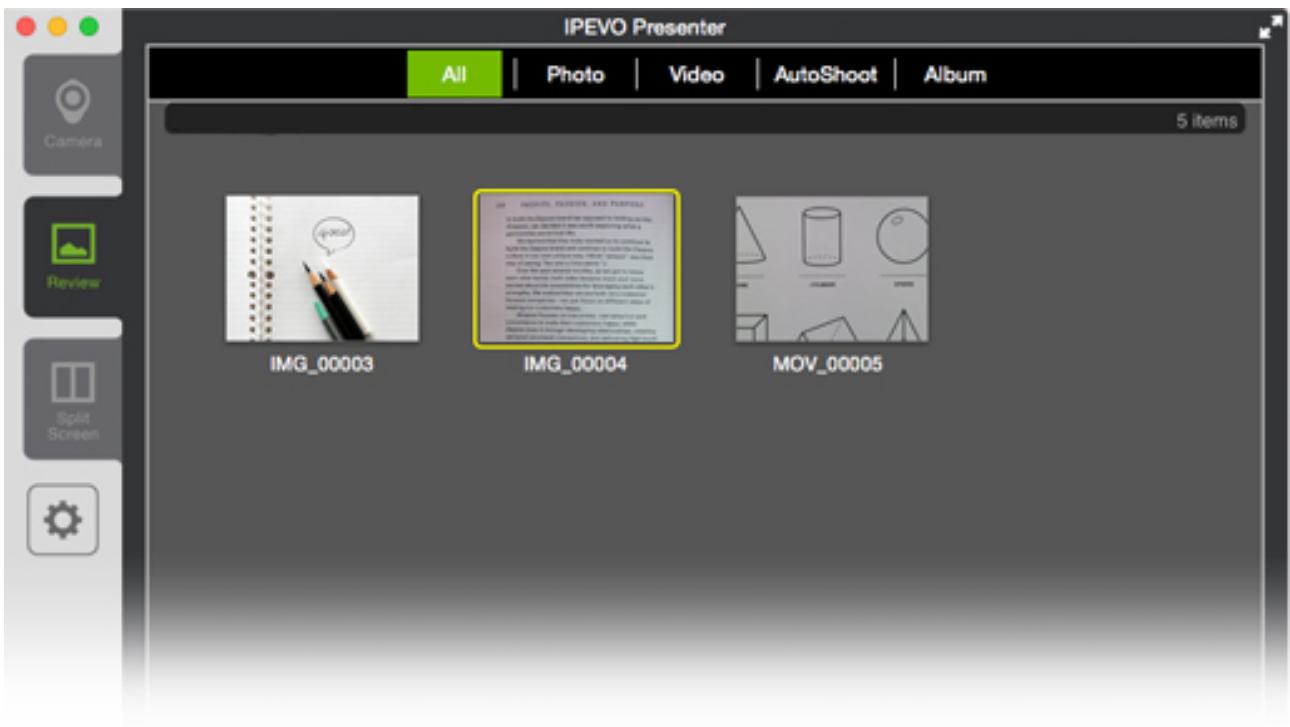
# Review Mode

Select the second tab on the left-hand side to enter Review mode. In this mode, you can view and manage the snapshots (photos) and videos you've taken with your doc cam.



- A All**
- B Photo**
- C Video**
- D AutoShoot**
- E Album**
- F Main Window Functions**
- G Thumbnail Size (or Zoom)**
- H Rotate**
- I Delete**
- J Share (or Action)**

- A ALL**  
Both photos and videos will be displayed.
- B Photo**  
Display only photos.
- C Video**  
Display only videos.
- D Auto Shoot**  
Display only the automated snapshot series you've taken.
- E Album**  
Display only the photo albums you've created.



## F Main Window Function

Click on an image to select that photo or video, which will become highlighted in a light gray. Use Shift+Click and Command+Click to select multiple files.

Double-click on the selected photo or video to make it larger and to enter a slideshow mode. Click the left or right arrows in the slideshow to view your library of photos and videos. Click the back arrow key (in green) to exit the slideshow.

You can right-click on an image to bring up Rotate, Delete and Share functions identical to the lower right-hand menu.

## Bottom Menu Functions

### G Thumbnail Size (or Zoom)

Adjust the slider to alter the size of the thumbnails being displayed

### H Rotate

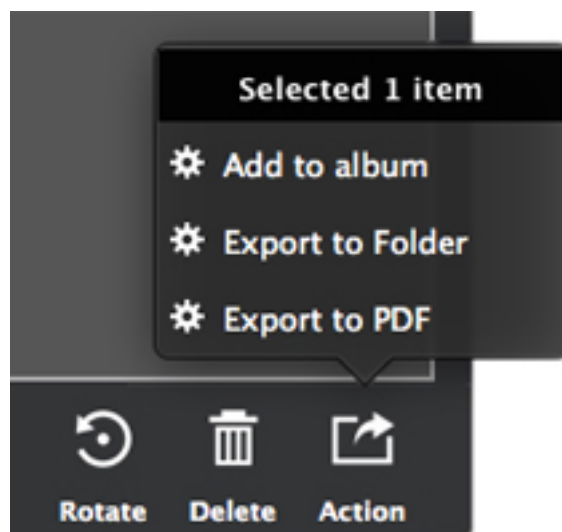
Rotate the selected photo(s) or video(s) in 90-degree increments counter-clockwise. This rotation will permanently alter the image.

### I Delete

Permanently delete the selected files from your hard drive. A pop-up window will confirm your decision.

### J Share (or Action)

Export the selected photo(s) or video(s) to a desired location on your hard drive. You can also export images as a PDF file to your desired location.





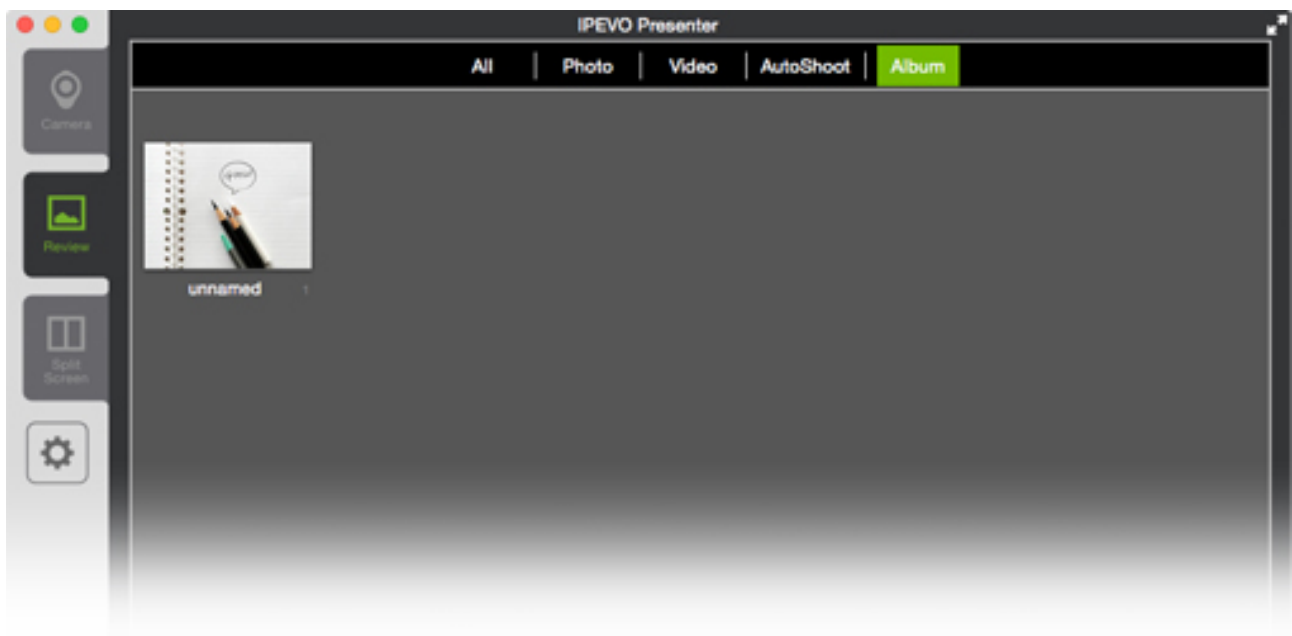
# Albums

Press Album on the top menu bar to access your photo albums. Albums are listed by date.

To rename an album, double-click on the current name to bring up an editable text field. Or, right-click on the album and select Rename.

Albums can be exported as PDF files using the Share function in the bottom-right corner.

To add photos to an album, select your photo(s) and then right-click. Choose "Add to Album." You may either add your selected photos to an existing album, or add them to a new album. The default name for a new album is "unnamed." Change the album's name as described earlier in this section.



## Splitscreen Mode

Have two IPEVO doc cams? Now you can connect both of them to your computer. Presenter will create two screen for the live feeds. Just set one Presenter window to camera A and the other to camera B. The feeds will appear live on the screen so you can view them at the same time. It's easily when you need to compare two works at the same time.

You can also assign two screen to the same doc cam. Make one window your default live stream and use the other window to zoom, freeze and otherwise highlight your material. Now Presenter has yet another way to enrich your presentation and give your audience more perspectives and more details.

To enter Splitscreen mode, click on the Split Screen tab on the left.



**A** Select Camera 1

**B** Select Camera 2

**C** Adjust Camera

**D** Horizontal/Vertical

**A Select Camera 1**

Select the camera for the first splitscreen pane.

**B Select Camera 2**

Select the camera for the second splitscreen pane. It can be the same or different than Camera 1.

**C Adjust Camera**

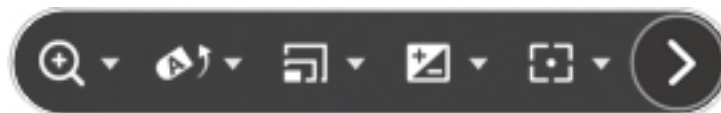
Within the Select Video Device pop-up, hit Adjust Camera to tweak the image coming from the selected camera.

**D Horizontal/Vertical**

Splitscreen can be presented either horizontally or vertically depending on your selection.

Each splitscreen pane can be further adjusted by hitting the "<" icon in the upper right to bring up more options. Hit ">" again to collapse the options

- **Zoom**  
Digitally zoom the image.
- **Rotate**  
Rotate the image.
- **Resolution**  
Change the resolution of the image.
- **Exposure**  
Brighten or darken the image.
- **Manual Focus**  
Drag the focus slider to the desired focus, which will lock into place. To return to Autofocus, uncheck the "AF-Lock" box.



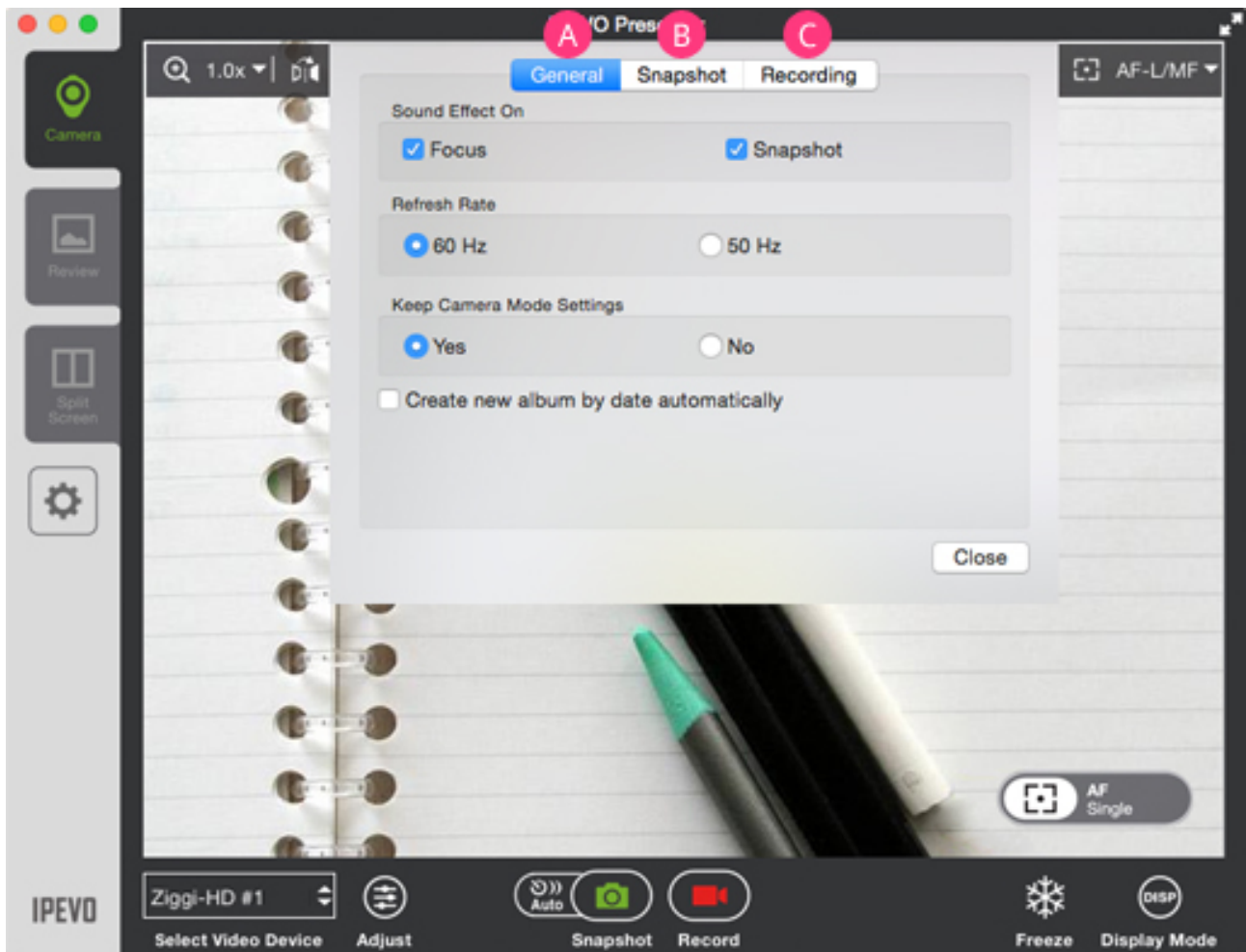
**Notes on Splitscreen Mode:**

High computer performance is required when two doc cams are connected at high resolutions. If the image freezes or lags in this setup, consider lowering the resolution.

If the second window shows no live image, try a different USB port. Your two doc cams must be plugged into different USB ports and cannot be plugged into the same USB hub.

# Settings

Click on the gear icon on the left-hand side (below the mode tabs) to enter Settings.



- A General**
- B Snapshot**
- C Recording**

## **A** General

- **Sound Effect On**

By default, there are brief sound effects when focusing and when taking a snapshot. Uncheck these options to silence these effects.

- **Refresh Rate**

Choose between 60Hz and 50Hz depending on your computer monitor's refresh rate.

- **Keep Camera Mode Settings**

By default, settings you change will stay that way when you launch Presenter in the future. Select No to return to original settings each time you launch Presenter.

- **Create new album by date automatically**

When checked, any snapshots you take will automatically be placed within an album according to the date when the snapshot was taken. Uncheck to prevent the automatic creation of albums.

## **B** Snapshot

- **Instant Preview**

Preview the snapshot you've just taken before returning to the live view. Default is Off (no preview). Choose between a two-second preview and four-second preview.

- **Snapshot Timer**

Once you press the snapshot button, tell the camera to wait either 3 seconds or 10 seconds before taking the snapshot. Default is Off (no delay between button press and captured snapshot).

## **C** Recording

- **Resolution**

Choose Auto Detect to have Presenter determine the best resolution to record your video. Or, you may choose your own custom resolution.

- **Audio Device**

Select your preferred audio device from the pulldown menu for use in conjunction with your doc cam.

Press Confirm to apply any changes to Settings you have made.

## Hotkeys

Please familiarize yourself with common Presenter functions accessible via hotkeys.

Zoom in and Zoom out: -, =

Mirror (Horizontal) and Mirror (Vertical): **alt + h**, **alt + v**

Rotate: **alt + left**, **alt + right**

Rotation reset: **alt + r**

Exposure change: **alt + up**, **alt + down**

Exposure reset: **alt + e**

Automatic exposure: **alt + a**

Manual focus: **control + alt + up** / **control + alt + down**

Auto focus lock: **m**

Focus: **f**

Freeze/Resume: **p**

Toggle display mode: **d**

Take a snapshot: **space**

Full Screen/Windowed: **alt + enter**