



# IPEVO Presenter

## Quick Start Guide

### Introduction

IPEVO Presenter is designed for use with the IPEVO line of document cameras, including the Point 2 View, Ziggi-HD, iZiggi-HD and VZ-1. Compatible with both PC and Mac, Presenter displays the live video feed from your camera. It's an ideal solution to send live video from your computer to your projector for lessons and presentations. Presenter also contains numerous handy tools and customizations to help you get the most from your camera.

This guide will help familiarize you with Presenter's functions and settings.

### Downloading IPEVO Presenter

Visit [support.ipevo.com](http://support.ipevo.com) for the latest version of Presenter for PC and Mac. Click the download link appropriate for your operating system, then follow the prompts to complete installation. Presenter is free to use and may be installed on multiple computers.



## Camera Mode

The default mode when starting IPEVO Presenter is Camera mode, selectable with the top tab on the left-hand side. This mode displays the live image coming from the doc cam connected to your computer. You can also customize your image in several ways using the pulldown menus and buttons.



- A** Zoom
- B** Mirror
- C** Rotate
- D** Resolution
- E** Exposure
- F** AF Lock/ Manual Focus
- G** Full Screen
- H** Select Video Device
- I** Adjust
- J** Snapshot
- K** Auto (MAC ONLY)
- L** Record
- M** Freeze
- N** Display Mode
- O** Focus & Focus Indicator

## A Zoom

Digitally zoom in on the subject. 1x (normal) to 6x zoom is possible.

## B Mirror

Flip the image along a horizontal axis, flop the image along a vertical axis, or select both Horizontal and Vertical for an image that is flipped and flopped. The default is Off, i.e. no mirroring.

## C Rotate

Rotate the image 360 degrees. Slide the green marker to your desired degree, use the arrow keys for incremental rotations, or use the preset buttons for instant 90-, 180- and 270-degree rotations. Press the Reset key to return to the original position. Both Mirror and Rotate are useful for orienting text so that it's readable.

## D Resolution

Change your resolution on the fly. Higher resolutions offer a higher-quality image, but they consume more computing power. If your image stutters or suffers from a strobe-like effect, consider lowering the resolution to increase the frame rate for a smoother image.

## E Exposure

Change your image exposure from 1 (darkest) to 15 (brightest). The default value is 8, i.e. medium brightness. If your image is too dark, consider increasing the exposure. Check the AE - Lock button to lock your camera's exposure to the current value.

## F AF Lock/ Manual Focus

If Autofocus (AF) Lock is checked, your camera will try to find the best focus for a sharp image. If you prefer manual focus instead, uncheck AF Lock and drag the slider to your desired focus, from very close (the flower icon) to very far away (the infinity icon).

## G Full Screen

Clicking this will cause the Presenter window to occupy the entire screen. This is useful for lessons and presentations.

## H Select Video Device

Select the video device Presenter should use. If properly connected, your device's name should appear here.

**Special note for iZiggi-HD users** – As a wireless document camera, iZiggi-HD connects to your computer via Wi-Fi. First-time connections can take a minute or two to be reflected in the Select Video Device box, so please allow for this delay before selecting iZiggi-HD as your video device.

## I Adjust

Pressing Adjust will take you to a Video Control menu with several camera settings you can adjust by dragging the corresponding sliders.

## J Snapshot

Take a snapshot of the current image. The snapshot will be saved on your hard drive as a JPG file and can be managed in Review mode.

## K Auto (MAC ONLY)

Clicking this will bring up a window allowing you to set up an automated shooting schedule. Once set, Presenter will take snapshots automatically at intervals of your choosing. This tool is ideal for archiving different materials quickly, for time-lapse photography, and for stop-motion videos. the Select Video Device box, so please allow for this delay before selecting iZiggi-HD as your video device.

- **Project Name**

Name your automated snapshot series. It can be accessed in Review mode.

- **Interval**

Type in numbers or tap the arrow keys to set your desired interval between snapshots in hours (HH), minutes (MM) and seconds (SS).

- **Total Images**

Type in numbers or tap the arrow keys to set the total number of images (snapshots) you'd like to take in your automated snapshot series.

- **Time Remaining**

Indicates the total time left for the current automated snapshot series to complete.

Press Start to begin the automated snapshot series according to the parameters you've set.



## L Record

Record a video of the current video feed. Once you press Record, it will turn into the Stop button, which you can press to stop the video recording. The video file will be saved to your hard drive and can be managed in Review mode.

## M Freeze

Pause the live image. Press again to unpause and return to live action.

## N Display Mode

Press to make visual overlays disappear so you have an uncluttered image suitable for presentation.

**For Windows:** Press to make all of the menu elements disappear. Press again to make those menu elements reappear.

**For Mac:** Press once to display the menu elements only. Press again to make the menu elements and a grid appear. Press a third time to display only a grid and not the menus. Press a fourth time to make both the grid and menu elements disappear. The cycle will then start over again with a fifth press.

## O Focus & Focus Indicator

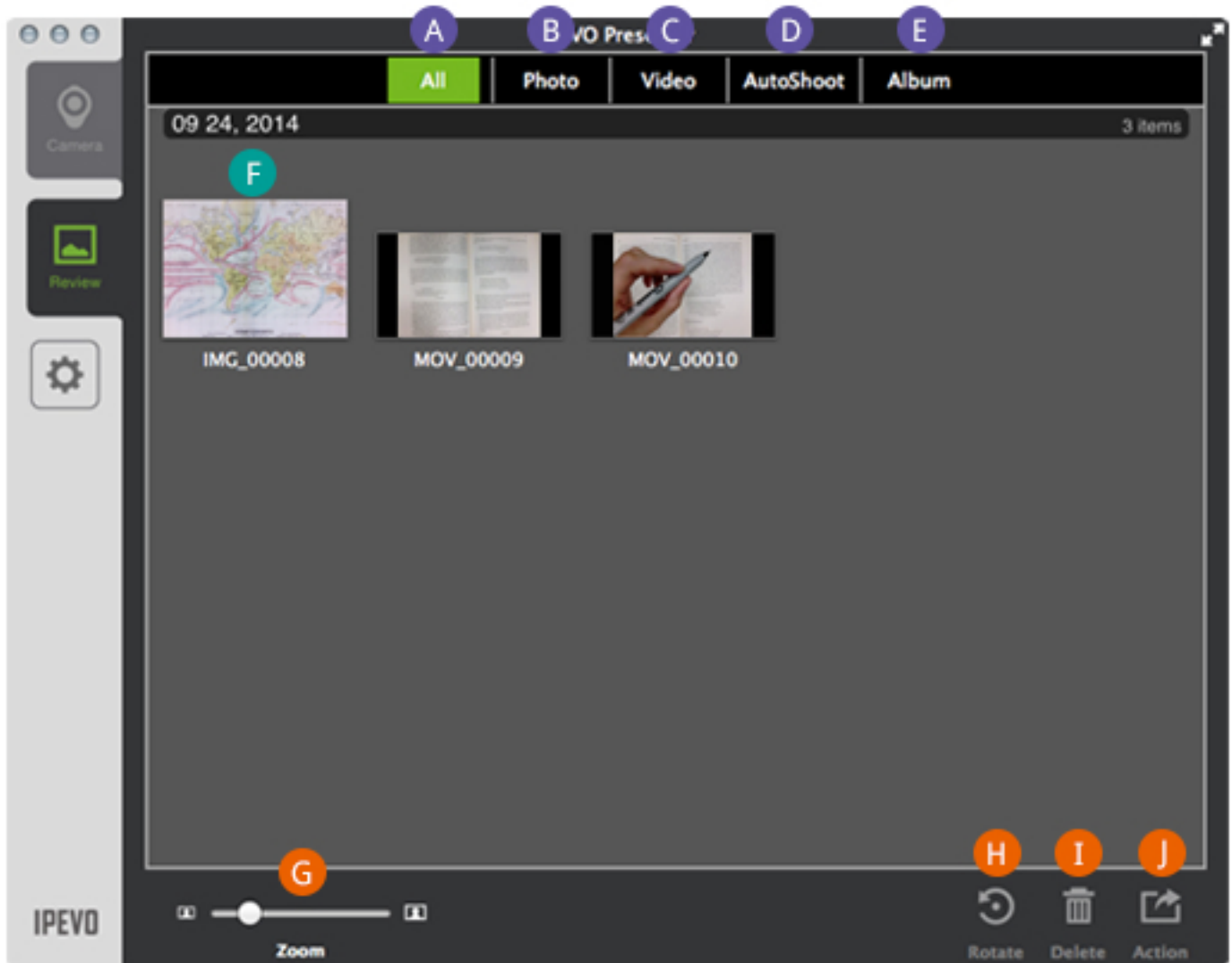
Indicates whether your doc cam is in Single focus mode (AF-S) or Continuous focus mode (AF-C). Pressing the crosshairs will cause your doc cam to find a new focus.



When focusing, four corners of a red box will appear in the center of the screen and a beep will sound, letting you know your camera is attempting to focus. The image may appear to slightly zoom in and out. When the doc cam is done focusing, the red corners will change to green corners, and there will be a brief sound effect.

## Review Mode

Select the second tab on the left-hand side to enter Review mode. In this mode, you can view and manage the snapshots (photos) and videos you've taken with your doc cam



- A** All
- B** Photo
- C** Video
- D** AutoShoot (MAC ONLY)
- E** Album (MAC ONLY)
- F** Main Window Functions
- G** Thumbnail Size (or Zoom)
- H** Rotate
- I** Delete
- J** Share (or Action)

**A All**

Both photos and videos will be displayed.

**B Photo**

Display only photos.

**C Video**

Display only videos.

**D AutoShoot (MAC ONLY)**

Display only the automated snapshot series you've taken.

**E Album (MAC ONLY)**

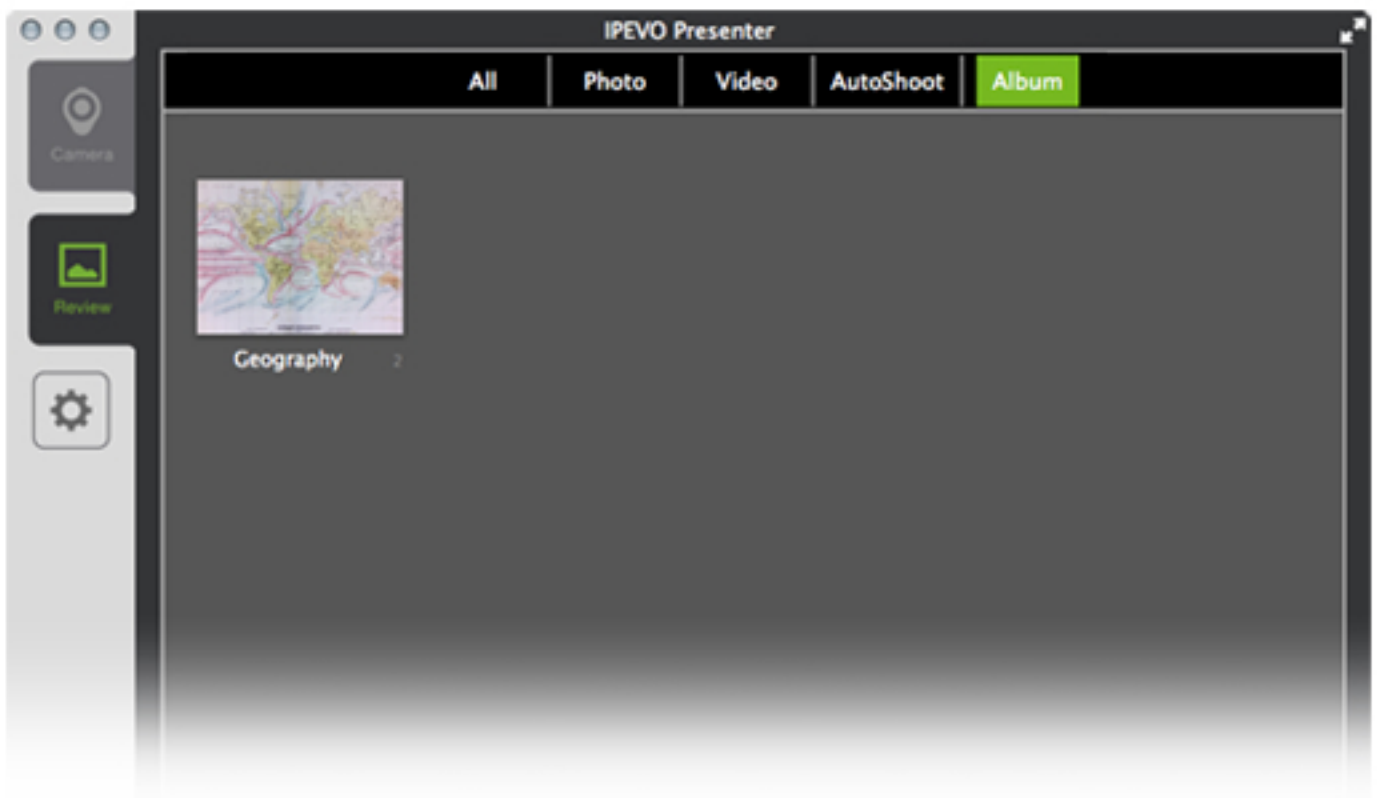
Display only the photo albums you've created.

Press Album on the top menu bar to access your photo albums. Albums are listed by date.

To rename an album, double-click on the current name to bring up an editable text field. Or, right-click on the album and select Rename.

Albums can be exported as PDF files using the Share function in the bottom-right corner.

To add photos to an album, select your photo(s) and then right-click. Choose "Add to Album." You may either add your selected photos to an existing album, or add them to a new album. The default name for a new album is "unnamed." Change the album's name as described earlier in this section.





## F Main Window Functions

Click on an image to select that photo or video, which will become highlighted in a light gray. Use Shift+Click (PC and Mac), Ctrl+Click (PC) and Command+Click (Mac) to select multiple files.

Double-click on the selected photo or video to make it larger and to enter a slideshow mode. Click the left or right arrows in the slideshow to view your library of photos and videos. Click the back arrow key (in green) to exit the slideshow.

You can right-click on an image to bring up Rotate, Delete and Share functions identical to the lower right-hand menu.

## G Thumbnail Size (or Zoom)

Adjust the slider to alter the size of the thumbnails being displayed.

## H Rotate

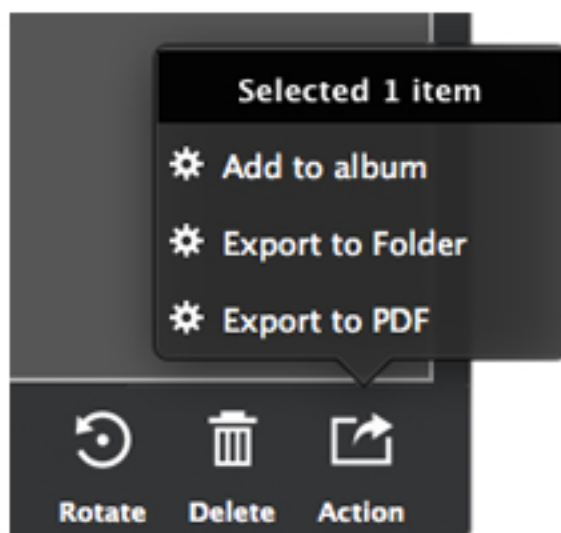
Rotate the selected photo(s) or video(s) in 90-degree increments counter-clockwise. This rotation will permanently alter the image.

## I Delete

Permanently delete the selected files from your hard drive. A pop-up window will confirm your decision.

## J Share (or Action)

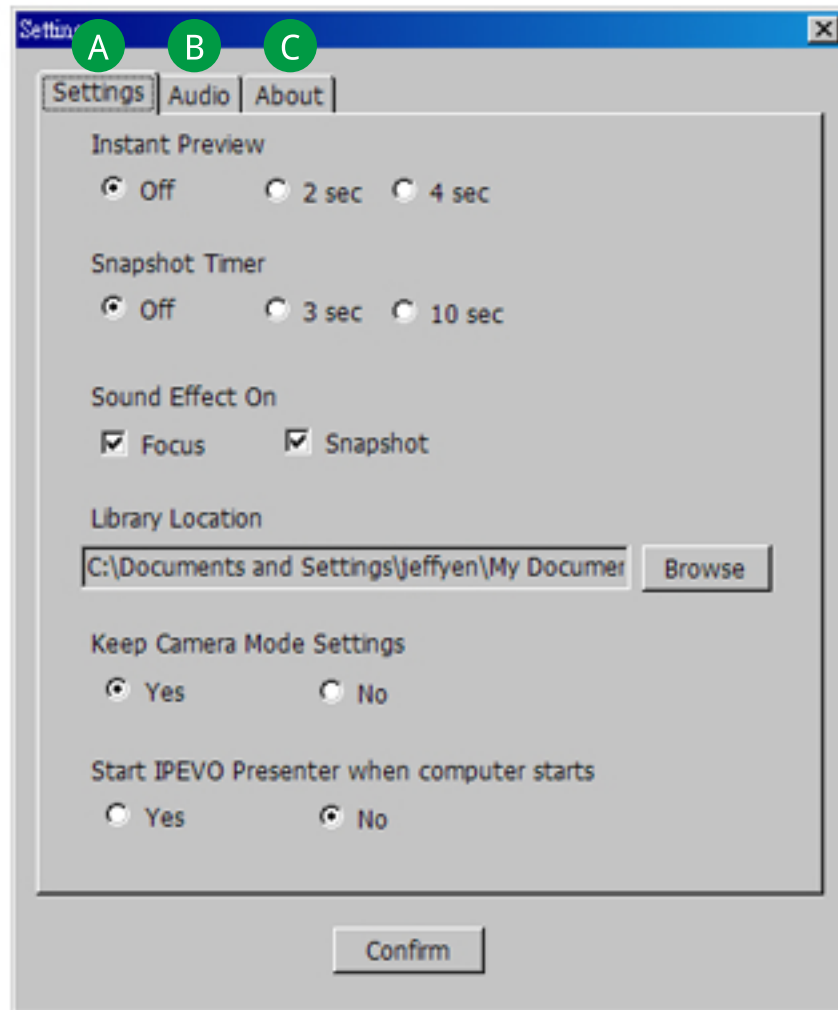
Export the selected photo(s) or video(s) to a desired location on your hard drive. You can also export images as a PDF file to your desired location.





## Settings (Windows)

Click on the gear icon in the lower left-hand corner to enter Settings.



**A** Settings

**B** Audio

**C** About

## A Settings

- **Instant Preview**

Preview the snapshot you've just taken before returning to the live view. Default is Off (no preview). Choose between a two-second preview and four-second preview.

- **Snapshot Timer**

Once you press the snapshot button, tell the camera to wait either 3 seconds or 10 seconds before taking the snapshot. Default is Off (no delay between button press and captured snapshot).

- **Sound Effect On**

By default, there are brief sound effects when focusing and when taking a snapshot. Uncheck these options to silence these effects.

- **Library Location**

Change the location on your hard drive where snapshots and videos taken in Presenter are stored.

- **Keep Camera Mode Settings**

By default, settings you change will stay that way when you launch Presenter in the future. Select No to return to original settings each time you launch Presenter.

## B Audio

- **Select Audio Device**

Select your preferred audio device from the pulldown menu for use in conjunction with your doc cam.

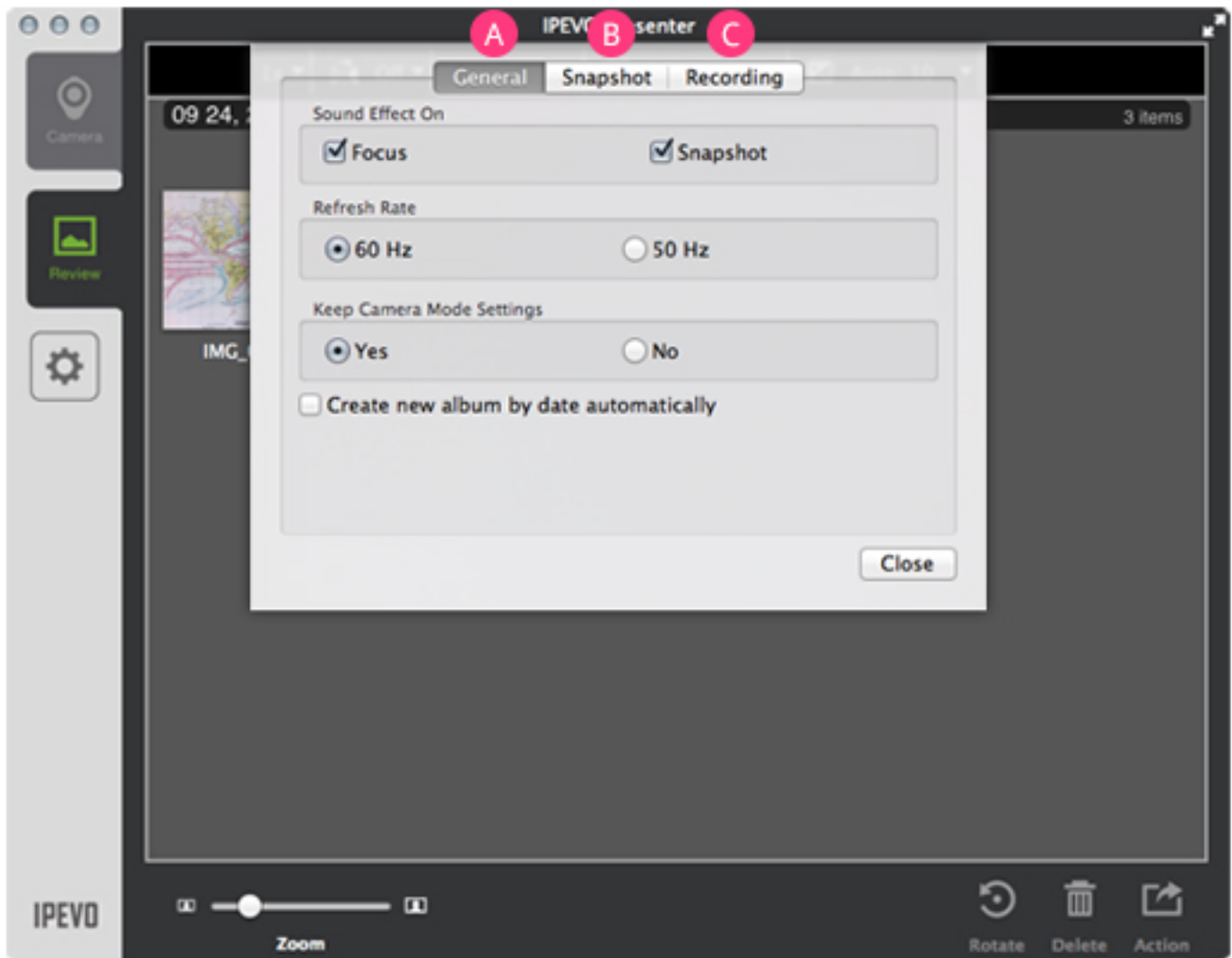
## C About

- This tab lists the version of Presenter you are using. Check [support.ipevo.com](https://support.ipevo.com) to ensure you have the latest version of Presenter.

Press Confirm to apply any changes to Settings you have made.

## Settings (Mac)

Click on the gear icon on the left-hand side (below the mode tabs) to enter Settings.



- A** General
- B** Snapshot
- C** Recording

## A General

- **Sound Effect On**

By default, there are brief sound effects when focusing and when taking a snapshot. Uncheck these options to silence these effects.

- **Refresh Rate**

Choose between 60Hz and 50Hz depending on your computer monitor's refresh rate.

- **Keep Camera Mode Settings**

By default, settings you change will stay that way when you launch Presenter in the future. Select No to return to original settings each time you launch Presenter.

- **Create new album by date automatically**

When checked, any snapshots you take will automatically be placed within an album according to the date when the snapshot was taken. Uncheck to prevent the automatic creation of albums.

## B Snapshot

- **Instant Preview**

Preview the snapshot you've just taken before returning to the live view. Default is Off (no preview). Choose between a two-second preview and four-second preview.

- **Snapshot Timer**

Once you press the snapshot button, tell the camera to wait either 3 seconds or 10 seconds before taking the snapshot. Default is Off (no delay between button press and captured snapshot).

## C Recording

- **Resolution**

Choose Auto Detect to have Presenter determine the best resolution to display your camera's image. Or, you may choose your own custom resolution.



- **Audio Device**

Select your preferred audio device from the pulldown menu for use in conjunction with your doc cam.

Press Confirm to apply any changes to Settings you have made.

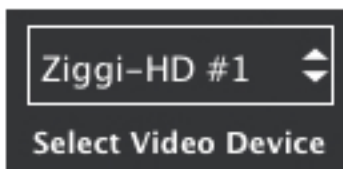
# Hotkeys

Please familiarize yourself with common Presenter functions accessible via hotkeys.

	 Mac OS	 Windows
Zoom in and Zoom out	<b>-, =</b>	<b>ctrl + -, ctrl + =</b>
Zoom reset		<b>ctrl + 0</b>
Mirror (Horizontal) and Mirror (Vertical)	<b>alt + h, alt + v</b>	<b>ctrl + h, ctrl + v</b>
Rotate	<b>alt + left, alt + right</b>	<b>ctrl + left, ctrl + right</b>
Rotation reset	<b>alt + r</b>	<b>ctrl + r</b>
Exposure change	<b>alt + up, alt + down</b>	<b>ctrl + up, ctrl + down</b>
Exposure reset	<b>alt + e</b>	<b>ctrl + e</b>
Automatic exposure	<b>alt + a</b>	<b>alt + a</b>
Manual focus	<b>control + alt + up / control + alt + down</b>	<b>ctrl + shift + up / ctrl + shift + down</b>
Auto focus lock	<b>m</b>	<b>m</b>
Focus	<b>f</b>	<b>f</b>
Freeze/Resume	<b>p</b>	<b>p</b>
Toggle display mode	<b>d</b>	<b>d</b>
Take a snapshot	<b>space</b>	<b>space</b>
Full Screen/Windowed	<b>alt + enter</b>	<b>alt + enter</b>

## Multiple Doc Cam Support

Presenter can now support multiple document cameras. You can generate a separate Presenter window for each of the document cameras connected to your computer. To do so, **press Ctrl+N on PC or Command+N on Mac**. A new Presenter window will be created. Use the "Select Video Device" function in Camera mode to select the appropriate doc cam for each of your Presenter windows.



**Also, for Mac computers only, you can assign the same document camera to two separate Presenter windows.** Simply assign the same doc cam for each window's "Select Video Device" function. For one example of how to use this function, you can have one window zoomed in to show details, and the other unzoomed to show the entire object.

---

## Questions? Comments?

If you've read this guide and still have questions, we're ready to help. Email [cs@ipevo.com](mailto:cs@ipevo.com) and a member of our Customer Support team will be happy to assist you.