

Mini

Network Storage Adapter

Quick Start Guide

A five-minute introduction



1. Getting Started

Mini Network Storage Adapter is a versatile file sharing device that allows you to add a USB drive to your local network for sharing online storage, downloading BitTorrent files, or streaming multimedia content to iTunes and game consoles.

Package Contents

The product package contains the following items:

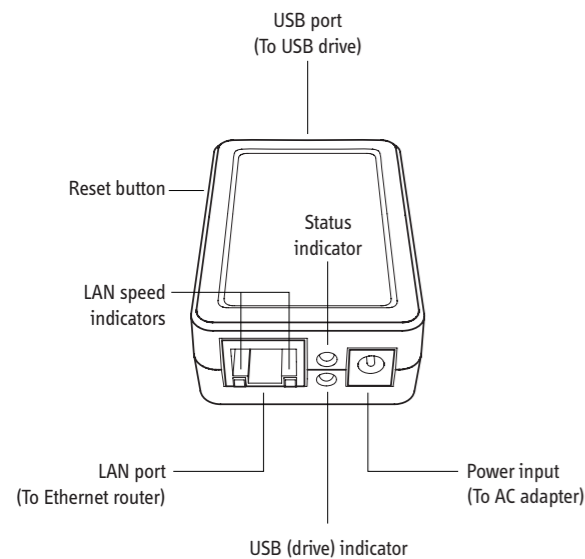
- Mini Network Storage Adapter
- Ethernet cable
- Power adapter
- CD-ROM with utility software (IPEVO Mini Dashboard) and user manual
- Quick Start Guide (this document)

Other Required Devices

To set up and use Mini, you will need the following items:

- A USB disk drive and cable with USB 2.0 connection
- Internet connection
- An Ethernet router
- A computer connected to the Ethernet router

2. Hardware Overview



USB port

Accepts the USB cable between the USB drive. (USB cable is not included in the package.)

Reset button

Pressing the Reset button reloads the default Mini hardware configurations including your Login password. (See Section 6, Troubleshooting for details about retrieving a lost password.)

Status indicator

Turns green when Mini is ready for operation.

LAN speed indicators

Show the current LAN speed, 10M/bps or 100M/bps.

LAN port

Accepts the LAN cable between the Ethernet router and Mini.

USB (drive) indicator

Turns orange when Mini recognizes the USB drive.

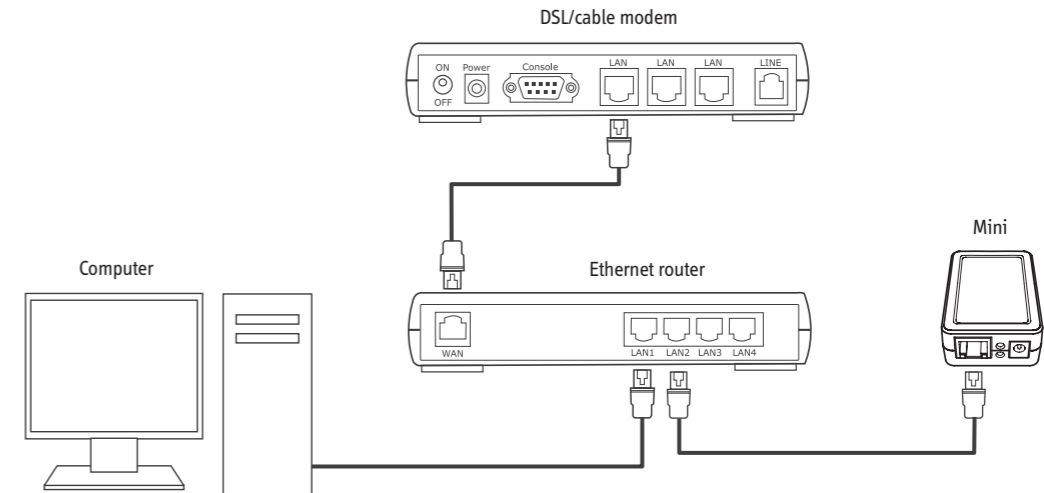
Power input

Accepts the AC adapter cable.

3. Connecting Mini

Before you begin, disconnect the power (the AC adapter) from Mini.

1. Make sure your computer is connected to an Ethernet router (which is also connected to the DSL or cable modem).
2. Connect Mini to the same Ethernet router. The connections should look like this diagram:



3. Connect Mini directly to your USB drive. Do NOT insert a USB hub in between.
4. Connect Mini to the AC adapter.
5. Make sure the LED indicators turn on.
Status indicator (green): Flashes three times, then stays on when Mini is ready.
USB indicator (orange): Turns on when Mini recognizes the USB drive.

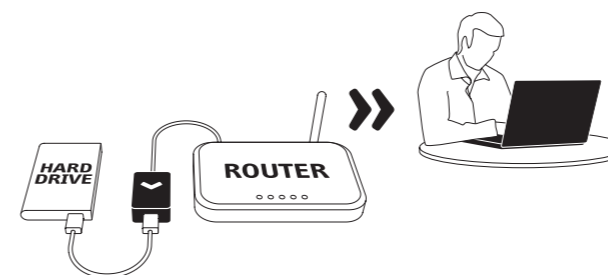
Note:

If you need to use a static (public) IP address, refer to the user manual. The default settings are as follows:
IP address: 169.254.0.10 / Subnet mask: 255.255.0.0

You can also...

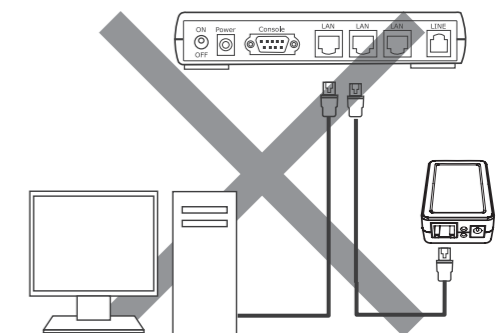
Use a wireless Ethernet router. In the diagram below:

- The wireless router is connected to Mini via a LAN cable.
- The computer is connected to the router wirelessly.



But you cannot...

Connect both Mini and your computer directly to the DSL/cable modem (unless your modem officially supports Ethernet router functionality).



4. Installing Mini

Installation Steps

1. **Insert** the CD-ROM into your computer's drive.

Windows: The Setup program runs automatically (or open *autorun.exe*). Follow the instructions.

Mac: Go to the *Apple_MacOS_X* folder and copy *Sdisk-enUS.jar* to your computer.

Linux: Go to the *Unix_and_Linux* folder and copy *Sdisk-enUS.jar* to your computer.

2. **Run** the software.

Windows: Activate *Find IPEVO Mini* from the Start menu.

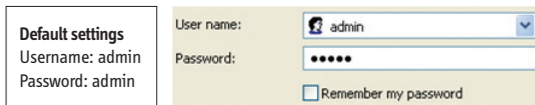
Mac/Linux: Activate *Sdisk-enUS.jar*. If you cannot activate the software, you will need to install JAVA on your computer. See <http://java.com> for more information and downloads.

3. **Detect** Mini on your network (if it does not appear automatically, click the *Search* button).



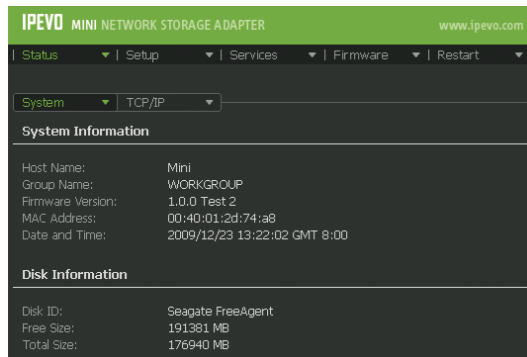
4. **Click** the *Connect*

button. A prompt will appear, asking you for the username and password.



(You can change your password using the software. See the user manual for details.)

5. **Confirm** the Mini system status in IPEVO Mini Dashboard, which will open in the browser.



5. Working with Mini

Here are the simple steps to using Mini for sharing files or downloading BitTorrent files.

- **Sharing Files:** store, access, and share files over your local network.
 - **Downloading BitTorrent Files:** use Mini's built-in BitTorrent client to download files (even without your computer).
- For more details and more usage examples, please see the user manual.

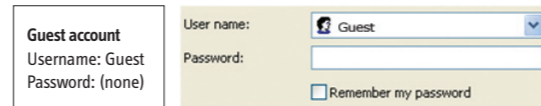
Sharing Files

Windows/Mac

1. Click the *Browse contents* button in the *Find IPEVO Mini* interface.



2. A prompt will appear, asking you for the username and password. Enter the username Guest to login as a guest account (no need to enter a password).



3. The Public folder in the drive will appear in the file manager window. Copy, paste and store files as in your desktop environment.

(Note: you can enter your drive with different accounts. For more details, see the descriptions on SMB Server in the user manual.)

Linux

1. Open file manager and locate your USB drive as a shared computer on your network.

2. Enter the same username and password (admin for both by default) to view the drive content.

3. Copy, paste and store files as in your desktop environment.

6. Troubleshooting

If Mini does not work as intended...

Reboot Mini or reload the default firmware settings.

- **Reboot:** Select *Restart* in IPEVO Mini Dashboard.
- **Reload default settings:** Select *Firmware > Default* in IPEVO Mini Dashboard.

(Note: record your configurations beforehand)

If you have forgotten your password...

Reset the Mini hardware to reload the default password admin by following these steps:

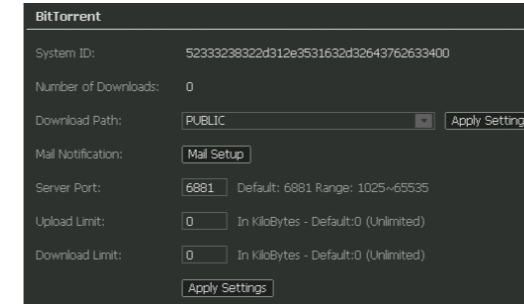
1. Disconnect the AC adapter from Mini.
2. Press and hold the Reset button on the side (use an unfolded paperclip).
3. Reconnect the AC adapter. Do NOT release the Reset button until the Status indicator stops flashing.
4. Enter the word "admin" (without quote marks, all lower case) for both username and password.

For other issues and up-to-date product information, visit our website at www.ipevo.com.

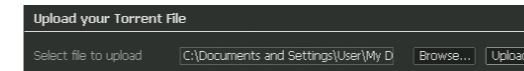
Downloading BitTorrent Files

1. **Select** *Services > BitTorrent* in IPEVO Mini Dashboard.

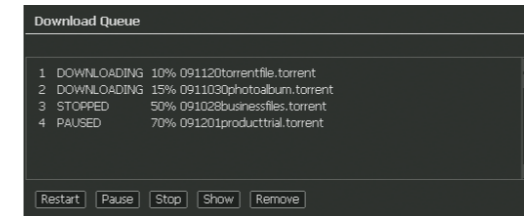
2. **Confirm** (or configure) the download location, email notification, and server settings.



3. **Upload** a torrent file in your computer.



4. **Download** will begin automatically. The Download Queue corner will show the progress.



Acknowledgement

- "Windows" is a registered trademark of Microsoft Corporation, registered in the US and other countries.
- "Mac", "iTunes" are registered trademarks of Apple Computer, Inc., registered in the US and other countries.
- "Linux" is a registered trademark of Linus Torvalds, registered in the US and other countries.
- "BitTorrent" is a registered trademark of BitTorrent, Inc., registered in the US and other countries.