

User Manual

IPEVO SKYPE USB HANDSET WITH LCD



1. BEFORE YOU BEGIN	2
2. INSTALLATION GUIDE	3
3. AUDIO SETTINGS	5
4. USER INTERFACE	6
5. OPERATING INSTRUCTIONS	9
6. FAQ AND TROUBLESHOOTING	13
7. WARRANTY AND CUSTOMER SERVICE INFORMATION	16

1. BEFORE YOU BEGIN

1. BEFORE YOU BEGIN

Thank you for purchasing the **IPEVO Skype USB Handset with LCD** (or **FR-33.2** – just to keep things simple)!

We would like to introduce you to a different way of using Skype – one we hope to be even easier and more enjoyable than ever before. To reduce your stress level during installation, we recommend a quick visit of the Package Contents and System Requirement details before you begin. This will also assist us in ensuring the smooth and efficient resolution of any problems.

Throughout this guide, you will find tips and reminders on the common issues encountered during installation. However, in the event of further difficulties, problems, questions or doubts, please don't hesitate to contact your local retailer or customer service representatives.

On the other hand, if you think **FR-33.2** has made Skype even better to use, or if you would like to pass on any friendly tips, suggestions or advice to the IPEVO team, please feel free to Skype us too!

PACKAGE CONTENTS

- IPEVO Skype USB Handset FR-33.2
- Holder/ Hanger
- Software installation CD which includes:
 - **FR-33.2** driver
 - **freeREC** software
 - User manual (PDF file)
- Quick Start Guide

SYSTEM REQUIREMENT

- Microsoft Windows XP or Vista 32-bit, Mac OSX 10.4~10.6
- 400 MHz Pentium® II or higher IBM® compatible PC with 128MB free RAM and 50MB free hard disk space
- Skype version 3.0 or above
- Broadband internet connection
- USB port
- CD-ROM drive

2. INSTALLATION GUIDE

2. INSTALLATION GUIDE

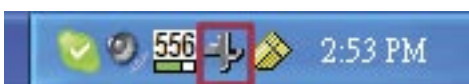
FR-33.2 has been designed for use with Skype, so you can choose to install Skype before or as part of the FR-33.2 installation process. However, you must be running in Skype and be logged into your account before you can use FR-33.2 to make calls.

1. Insert the FR-33.2 Setup CD into your CD-ROM drive. The following setup window will appear to begin the installation process.



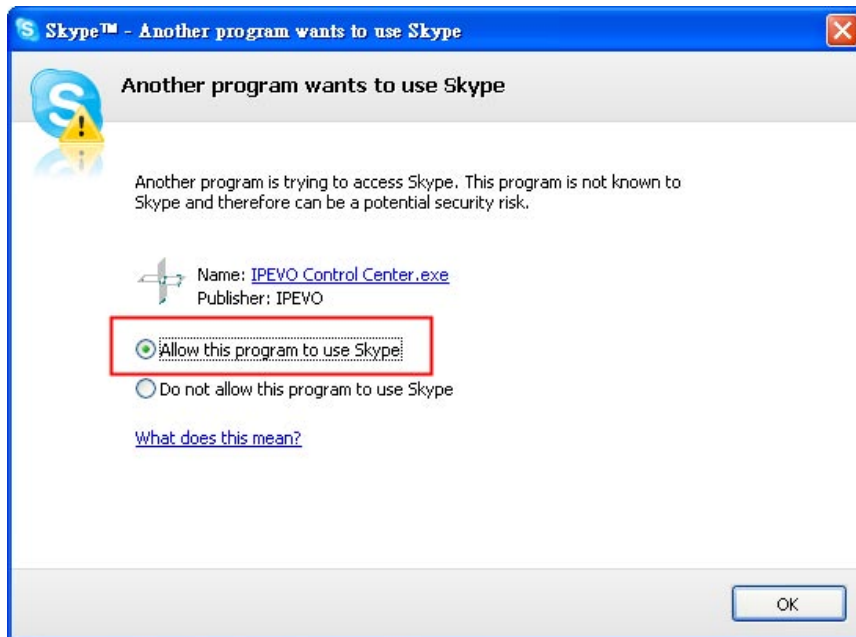
Problems?: If the installation process does not start automatically at this stage, simply locate your CD-ROM drive and double click on the **IPEVO.exe** icon to start the process manually.

2. Click **Link to Skype software** if it is not already installed on your computer. An installation wizard will guide you through the rest of the process. You can also download the latest version of **Skype** at <http://www.skype.com/download/>
3. Click on **Install FR-33.2 Driver**. Follow the on screen instructions to install the software.
4. The installation program will prompt you to plug in **FR-33.2** before continuing with the installation. If you have already connected the device, simply press **Next** to continue with the rest of the procedure.
5. Once installation is complete, you will be asked to launch the **IPEVO Control Center** (from the Desktop shortcut or Start Menu) to configure and customize preferences for **FR-33.2** (see **Audio Settings** for details). When the **IPEVO Control Center** is running, you will see the icon displayed in the system tray. The program will now start automatically each time you plug in FR-33.2 on your computer.



2. SOFTWARE INSTALLATION

6. Launch Skype and login to your account if you have not already done so. When running IPEVO Control Center with Skype for the first time, a prompt will appear to inform you that another program wants use Skype. Choose Allow this program to use Skype.



7. Once your Skype ID is displayed on the FR-33.2 LCD Screen, the FR-33.2 USB Handset is ready to use.




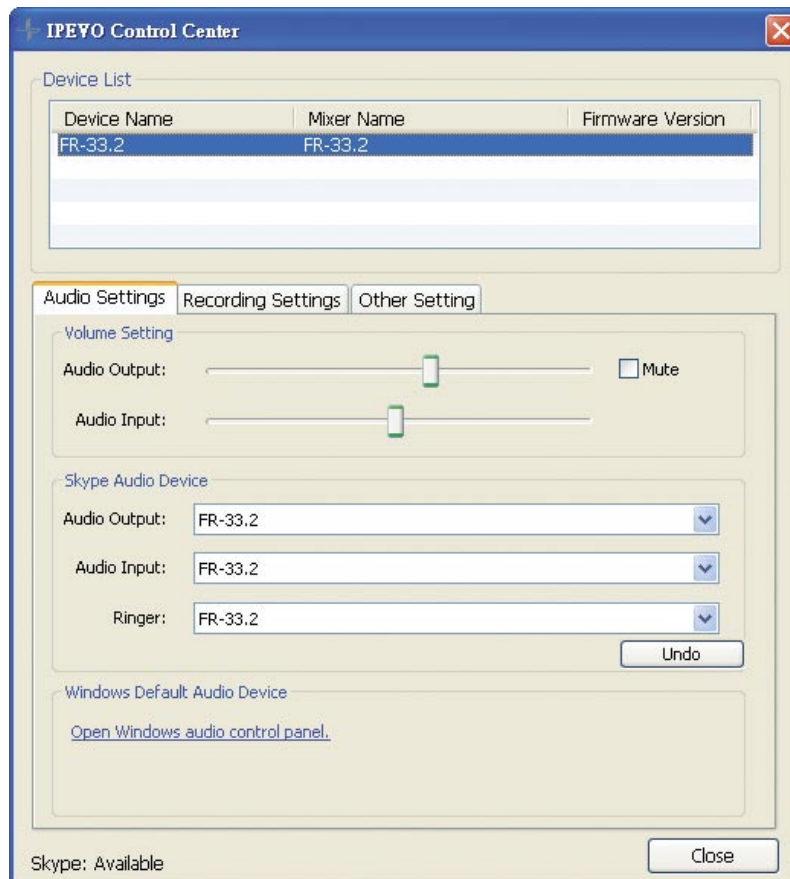
Problems?: Before making calls on the **FR-33.2**, please have the **Skype** software running on your PC and login to your account. **FR-33.2** is designed for use with **Skype** to place calls, and will not work without this software.

3. HARDWARE SETTINGS

3. HARDWARE SETTINGS

The **IPEVO Control Center** lets you easily configure preferences for **FR-33.2**, including **Audio**, **Language** and other settings.

1. To correctly configure audio settings for your computer and handset: Double click on the  icon from the system tray to open the **IPEVO Control Center**.



Problems?: If the **IPEVO Control Center** is not running, you can start the program manually on the Start Menu under **All Programs/IPEVO** and click on the **IPEVO Control Center** icon.

2. Under **Audio Settings** tab, you will see the **Skype Audio Device** panel. For **Audio Input** value, select **FR-33.2** from the drop-down list. For **Audio Output** value, select **FR-33.2** from the drop-down list.
3. You can customize your preferences for other settings from the **IPEVO Control Center** under the relevant option tabs, or from the icon on the system tray.

TIP: If you wish to use **FR-33.2** and your computer speakers at the same time, please select your computer sound card from link provided in the **Windows Default Sound Device** panel.

4. USER INTERFACE

4.1 HANDSET LAYOUT

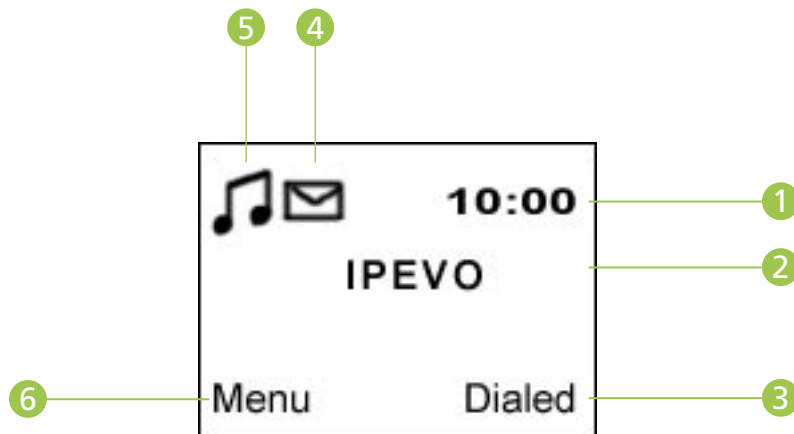




4. USER INTERFACE

- (1) **Receiver:** Audio output
- (2) **LCD Display screen**
- (3) **Mute:** Turn on/off microphone
- (4) **Right soft button:** Select or confirm the option shown immediately above this key on the LCD display screen. Function is context sensitive.
- (5) **Joggle (Jog/Toggle) Key:** Bring up the **Skype Contact List**. Also used to select from a list of items on the screen.
- (6) **End/No button:** End the current call or cancel the previous operation.
- (7) **List button:** Press to display and cycle through different Skype Contact lists.
- (8) **Microphone:** Audio input
- (9) **Volume buttons:** Adjust volume level.
- (10) **Left soft button:** Select or confirm the option shown immediately above this key on the LCD display screen. Function is context sensitive.
- (11) **Record button:** Launch the freeRec software (see **Recording Calls** in **Operating Instructions**).
- (12) **Call/Yes button:** Answer the incoming call or initiate a call.
- (13) **INTL button:** Initiate a **SkypeOut** call.
- (14) **Activate button:** Bring up **Skype** on the PC monitor for user input and operations. The LCD display screen will show **“PC Mode”**. In PC Mode pressing the Activate button cycles through different tabs on your **Skype** window.
- (15) **0~9, *, # button:** As per normal handset

4. USER INTERFACE













4.2 DISPLAY SCREEN LAYOUT



- (1) Call Timer
- (2) Your Skype ID
- (3) Dialed Numbers (last 15)
- (4) New voice message notification
- (5)  Call alert symbol (if  appears, it means call alert is off)
- (6) Menu

FR-33.2 displays the status of your Skype Contacts using the following symbols:

FR-33.2 and Skype Status Reference Table

FR-33.2	Skype	Status
		Online
		Skype Me!™
		Away
		Do Not Disturb
		Not Available
		Offline

5. OPERATING INSTRUCTIONS

5. OPERATING INSTRUCTIONS

Once you have Skype and IPEVO Control Center running, the FR-33.2 handset lets you to make or receive calls without any further computer operation. You can also receive or reject incoming calls by pressing the Call/Yes and End/No button respectively.

5.1 MAKING CALLS

The FR-33.2 Skype phone lets you call anyone in your Skype Contact list, as well as making calls to telephone or mobile phone numbers. The table below shows the call rate and contact requirements for these two different types of call methods.

Two Types Of Calling Methods using Skype

Call Type	Skype-to-Skype	SkypeOut.
Rate	Free	Rate varies depending on region
Contact	Both parties must use Skype	Receiver is not on-line or using Skype.

5.1.1 MAKING SKYPE-TO-SKYPE CALLS:



Bring up your Skype Contact List (push the **Joggle** key)

Scroll through the list of contacts (push the **Joggle** key up/down)

Make a call to the displayed Skype ID (Press the **Call/Yes** button)

Hang up at the end of the call (press the **End/No** button)

TIP: You can use the number keys on FR-33.2 to locate contacts alphabetically. Press the number key corresponding to the first letter of your Skype Contact. Repeat to cycle through available letters for that number key.

5. OPERATING INSTRUCTIONS

5.1.2 MAKING SKYPEOUT CALLS:

You can make SkypeOut calls to landlines or mobile phones by pressing the **INTL** button and dial the appropriate number, or bring up your SkypeOut contact list and search for a stored number.

Dialing the number directly



THEN



Press the **INTL** button

Dial the telephone/mobile number (using the **Number keys**)

Dialing a stored number



THEN



Bring up the contact list (Press the **List** button until SkypeOut appears on screen)

Scroll to the contact you wish to call (Use the **Joggle key**)

TIP: Push the Joggle key once to move up or down through your contact list. Push and hold the key to scroll quickly through long lists, or alternatively locate the contact alphabetically using the number keys.

5.1.3 CALLING A RECENT CONTACT



THEN



From the main menu, select Dialed from the main menu (press the **Right soft** button)

Call the last dialed number (press the **Call/Yes** button)

Scroll through the last 15 dialed contacts Call the selected contact (press the **Call/Yes** button)

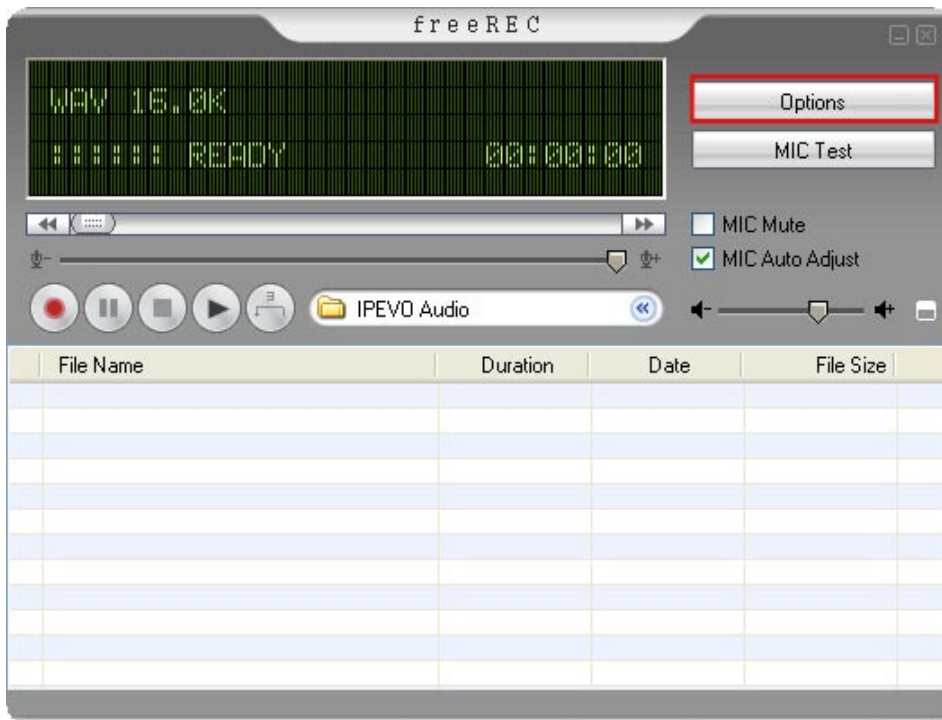
5. OPERATING INSTRUCTIONS

5.2 RECORDING CALLS

freeRec is an easy-to-use free software program that allows you record and save any voice and Skype calls onto your PC. Audio files are saved in Wave (.wav) format.

5.2.1 CONFIGURING FREEREC

1. Launch **freeREC** by pressing the **Record** button on the FR-33.2. You can also start freeREC by clicking on the **Open freeREC** button located in the IPEVO Control Center in the **Recording Settings** tab.
2. Click the **Options** button from the main screen to open the **Options** window.
3. Modify or change any settings according to your personal preference.
4. You can also change the location where the audio files are saved by clicking on the blue arrow next to where the folder name is displayed.





5. OPERATING INSTRUCTIONS





5.2.2 RECORDING AUDIO FILES

To use freeREC for recording calls, make sure FR-33.2 is connected to your computer and that the IPEVO Control Center is running.

Some of the recording functions on freeREC can also be conveniently accessed on FR-33.2:

- Record/Pause button  launches freeREC.
- The left or right soft keys  provide context sensitive functions during recording operations.

Recording audio files:

To	FR-33.2 (Soft key text)	In freeREC
Start recording	Left soft key (REC)	
Pause recording	Left soft key (Pause)	
Resume recording	Left soft key (Resume)	
Stop recording	Right soft key (Stop)	

You can pause and resume a recording at anytime using **freeREC** or **FR-33.2**. This is useful for editing any parts or interruptions from the main recording.

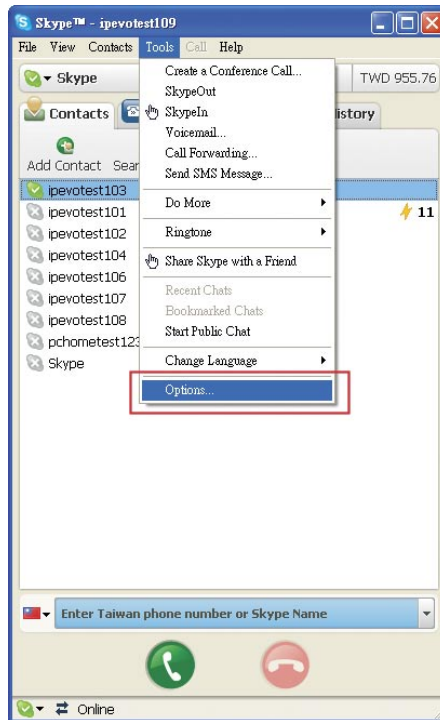
Note: Pressing the stop button while the recording is paused will stop the recording and save it as an audio file.

6. FAQ AND TROUBLESHOOTING

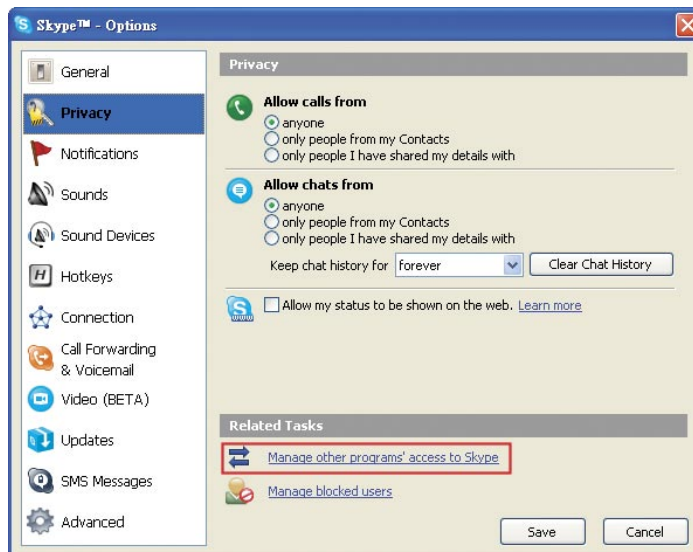
I'VE ACCIDENTALLY SELECTED 'DO NOT ALLOW THIS PROGRAM TO USE SKYPE', HOW DO I CHANGE THIS SETTING?

The buttons and call features for FR-33.2 will not work if you selected 'Do not allow this program to use Skype' when you connect FR-33.2 to your computer. To change this setting from Skype:

1. Start **Skype**. Go to the **Tools** menu and select **Options** from the drop-down menu.



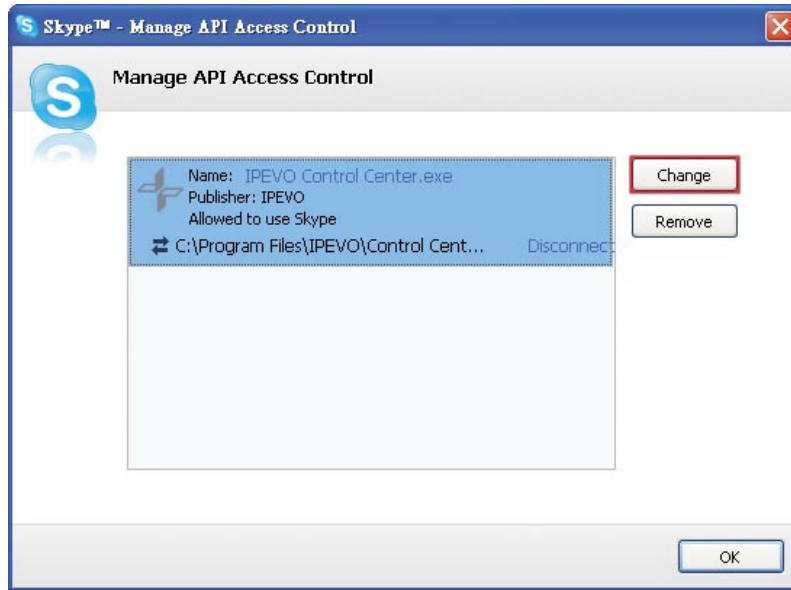
2. Select the **Privacy** panel from the menu on the left, locate the **Related Tasks** section and click on the link 'Manage other programs' access to Skype'.



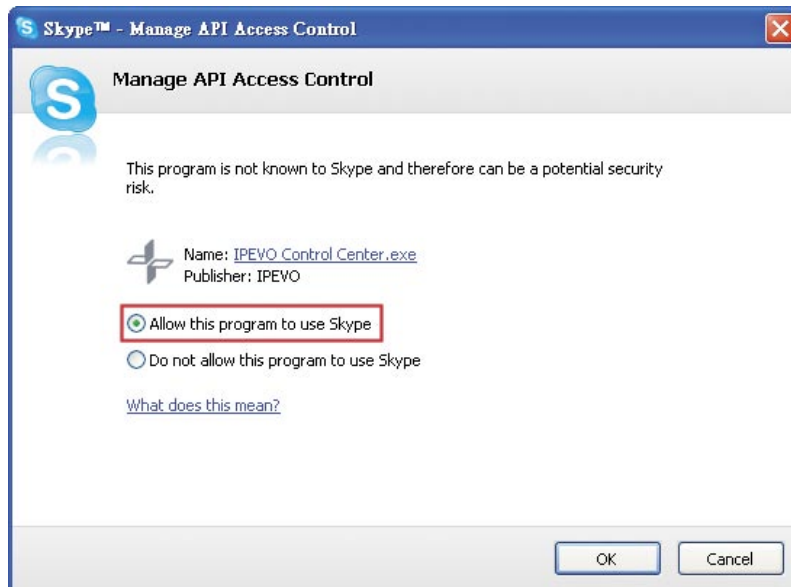
Note: In newer versions of Skype, this option may be found under the **Advanced** panel instead of the **Privacy** panel.

6. FAQ AND TROUBLESHOOTING

3. Select **IPEVO Control Center.exe** in the **Manage API Access Control** window and click **Change**.



4. From the list of options provided for **IPEVO Control Center.exe**, select **Allow this program to use Skype** and click **OK**. Remember to press **Save** when you leave the **Options** window to save your settings.



6. FAQ AND TROUBLESHOOTING

NOTHING HAPPENS WHEN I PRESS THE SKYPE BUTTON ON FR-33.2.

The FR-33.2 driver runs an automatic background service as the **IPEVO Control Center** on your desktop system tray. If the **IPEVO Control Center** icon is not visible on your system tray, go to **Start > All Programs > IPEVO** and click on **IPEVO Control Center** to start it manually.

THE OTHER PARTY CANNOT HEAR ME WHEN I MAKE A CALL USING FR-33.2.

Please go to the **IPEVO Control Center** and locate the **Audio Settings** tab. Under the **Skype Audio Device** panel, check to see if the **Audio Input** value has been set to **FR-33.2**. Alternatively, try adjusting the **Audio Input** slider under the **Volume Setting** panel and make sure the **Mute** box is not checked.

I HAVE CONNECTED FR-33.2 TO THE COMPUTER, BUT THERE IS NO SOUND COMING FROM THE EXTERNAL SPEAKERS.

Please open **IPEVO Control Center** and select the **Audio Settings** tab. Under **Windows Default Audio Device**, click on the **Open Windows audio control panel** link and select your computer speakers then click **OK**.

I HAVE CONNECTED FR-33.2 TO THE COMPUTER, AND THERE IS SOUND COMING FROM THE SPEAKERS BUT NOT FROM FR-33.2.

Please open **IPEVO Control Center** and select the **Sound Devices** tab. Under the **Skype Audio Device** panel, check that the **Audio Output** value is set to **FR-33.2** and click **OK**.

7. WARRANTY AND CUSTOMER SERVICE INFORMATION

INTENDED USE

This device is designed for VoIP (Voice over IP) telecommunication via Skype™. All other usages are to be considered as unintended use. Unauthorized modifications or reconstruction not described in this manual are not permitted.

LIMITED WARRANTY

This limited warranty (hereinafter the Warranty) is valid for the product TR-10 USB Personal Conference Phone (hereinafter the Product). The Warranty is only valid in the country where the product was originally purchased.

- The Warranty only covers manufacturing defects, and excludes defects caused by the inappropriate use or storage of the Product.
- The Warranty is issued by IPEVO, Inc. to the end purchaser of the Product (hereinafter the Customer).
- In accordance with the Warranty, the Customer has a sole claim to demand repair or replacement of the Product but may not assert claims or seek compensation against the manufacturer/retailer for further losses (including, but not limited to, the indirect loss of data or profit).
- The Warranty provides coverage over a period of 12 months, commencing from initial purchase date of the Product's by the Customer from IPEVO. Subsequent changes of ownership do not extend the warranty period.
- The Warranty is valid with the proviso that the Product is shipped to IPEVO within the warranty period. In the event of any faults or defects with the Product, it must be shipped back to IPEVO. Products will be repaired or exchanged at IPEVO's own discretion. The warranty period is not extended for any repaired or replaced Products. Exchanged parts are the property of IPEVO, Inc.
- The Warranty is valid solely on the condition that the original proof of purchase issued is presented with the Product.

7. WARRANTY AND CUSTOMER SERVICE INFORMATION

THE WARRANTY WILL NOT BE VALID IF

- the Product has been opened or repair attempted by any person(s) other than IPEVO,
- any defects and faults are due to general wear, incorrect use or storage, including those caused by poor maintenance of the Product,
- the defect or fault is the result of unintended use of the Product (refer to Intended Use),
- the defect or fault is due to external causes such as (but not limited to) rough handling or accidents,
- the defect or fault is caused by the use of accessories or other peripherals that are not original accessories intended for use with the Product,
- the defect or fault is caused by a disruption to the network or power supply,
- software in the Product needs to be upgraded due to changes in the network.

Aside from any statutory rights and terms set out above, the Customer shall have no other basis for making a claim under the Warranty. Amendments or additions to the Warranty are only valid with the written consent of IPEVO, Inc.

Copyright© 2008 IPEVO Inc. All rights reserved



Customer Service (International)

Email: service@ipevo.com

Tel: +886-2-5550-8686

Customer Service (USA)

Email: cs@ipevo.com

Tel: +1-408-490-3085

 <http://www.ipevo.com>